

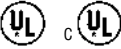


# HORIZON ELECTROL®

Automatic Electric Projection Screen Model

DA-LITE SCREEN COMPANY, INC.  
 3100 North Detroit Street  
 Post Office Box 137  
 Warsaw, Indiana 46581-0137  
 Phone: 574-267-8101  
 800-622-3737  
 Fax: 574-267-7804  
 Toll Free Fax: 877-325-4832  
 www.da-lite.com  
 e-mail: info@da-lite.com

## SPECIFICATION DATA

**SUGGESTED SPECIFICATIONS:** \_\_\_\_\_ projection screen(s), \_\_\_\_\_ (H) x \_\_\_\_\_ (W), electrically operated 120 volt (60 Hz) not more than 2.2 amp. Shall have two specially designed motors mounted inside two rollers, to be three wire with ground quick reversal type, oiled for life, with automatic thermal overload cutout, integral gears, capacitor, embedded microprocessor control and an electric brake to prevent coasting. To have preset but adjustable limit switches to automatically stop the picture surfaces in the "up" and "down" positions. Shall have electronic controller to adjust to three intermediate positions. The rollers to be of rigid metal. Screen fabric to be flame-retardant and mildew resistant fiberglass with black masking borders standard. To have masking fabric to convert the screen to different aspect ratios. Bottom of fabric to be formed into a pocket holding a metal rod. The ends of the rod shall be protected by heavy-duty plastic caps. Bottom of the masking fabric shall be sewn into a pocket holding a metal rod. Case to be of wood and be finished with a black primer coat, ready to accept final finish by others. To be complete with a six-button switch with a cover plate. Screen to be listed by Underwriters' Laboratories. 

**Matte White:** Seamless in all standard sizes.

**Video Spectra 1.5 and High Contrast Matte White:** Available in sizes where both dimensions do not exceed 8'.

**High Power®:** Horizontal seam required when both dimensions exceed 6'.

### NTSC (1.33:1) NATIVE ASPECT RATIO DIMENSIONS

| Viewing Area H x W |           |             |           |                  |           |                    |           | *Overall Length of Case |     | Approx. Ship. Wt. |      |
|--------------------|-----------|-------------|-----------|------------------|-----------|--------------------|-----------|-------------------------|-----|-------------------|------|
| NTSC (1.33)        |           | HDTV (1.78) |           | Letterbox (1.85) |           | Cinemascope (2.35) |           |                         |     |                   |      |
| In.                | Cm        | In.         | Cm        | In.              | Cm        | In.                | Cm        | In.                     | Cm. | Lbs.              | Kg.  |
| 43" x 57"          | 109 x 145 | 32" x 57"   | 81 x 145  | 31" x 57"        | 79 x 145  | 24" x 57"          | 61 x 145  | 74 1/2"                 | 189 | 85                | 38.6 |
| 50" x 67"          | 127 x 170 | 38" x 67"   | 97 x 170  | 36" x 67"        | 91 x 170  | 29" x 67"          | 74 x 170  | 84 1/2"                 | 215 | 98                | 44.5 |
| 60" x 80"          | 152 x 203 | 45" x 80"   | 114 x 203 | 43" x 80"        | 109 x 203 | 34" x 80"          | 86 x 203  | 97 1/2"                 | 248 | 117               | 53.1 |
| 69" x 92"          | 175 x 234 | 52" x 92"   | 132 x 234 | 50" x 92"        | 127 x 234 | 39" x 92"          | 99 x 234  | 109 1/2"                | 278 | 133               | 60.3 |
| 87" x 116"         | 221 x 295 | 65" x 116"  | 165 x 295 | 63" x 116"       | 160 x 295 | 49 1/2" x 116"     | 126 x 295 | 133 1/2"                | 339 | 172               | 78.0 |
| 105" x 140"        | 267 x 356 | 79" x 140"  | 199 x 356 | 76" x 140"       | 192 x 356 | 59 1/2" x 140"     | 151 x 356 | 157 1/2"                | 400 | 193               | 87.5 |

### HDTV (1.78:1) NATIVE ASPECT RATIO DIMENSIONS

| Viewing Area H x W |           |                  |           |                    |           | *Overall Length of Case |     | Approx. Ship. Wt. |      |
|--------------------|-----------|------------------|-----------|--------------------|-----------|-------------------------|-----|-------------------|------|
| HDTV (1.78)        |           | Letterbox (1.85) |           | Cinemascope (2.35) |           |                         |     |                   |      |
| In.                | Cm        | In.              | Cm        | In.                | Cm        | In.                     | Cm. | Lbs.              | Kg.  |
| 32" x 57"          | 81 x 145  | 31" x 57"        | 79 x 145  | 24" x 57"          | 61 x 145  | 74 1/2"                 | 189 | 85                | 38.6 |
| 38" x 67"          | 97 x 170  | 36" x 67"        | 91 x 170  | 29" x 67"          | 74 x 170  | 84 1/2"                 | 215 | 98                | 44.5 |
| 45" x 80"          | 114 x 203 | 43" x 80"        | 109 x 203 | 34" x 80"          | 86 x 203  | 97 1/2"                 | 248 | 117               | 53.1 |
| 52" x 92"          | 132 x 234 | 50" x 92"        | 127 x 234 | 39" x 92"          | 99 x 234  | 109 1/2"                | 278 | 133               | 60.3 |
| 65" x 116"         | 165 x 295 | 63" x 116"       | 160 x 295 | 49 1/2" x 116"     | 126 x 295 | 133 1/2"                | 339 | 172               | 78.0 |
| 79" x 140"         | 199 x 356 | 76" x 140"       | 192 x 356 | 59 1/2" x 140"     | 151 x 356 | 157 1/2"                | 400 | 193               | 87.5 |

\*Add 3" to overall length of case for mounting brackets.

Overall case length dimensions ± 1/8".

Detail dimensional drawings, wiring diagrams and installation instructions available upon request.

Specifications subject to change without notice.

Custom formats and sizes are available upon request.

All sizes come standard with 2" total black drop at top.

### WHEN ORDERING MARK APPROPRIATE SELECTIONS:

Select size from chart above.

#### Viewing surface:

- Matte White 
 Video Spectra 1.5   
 High Contrast Matte White 
 High Power®   
 Greenguard® and Greenguard® Children and Schools Certified.

#### Options:

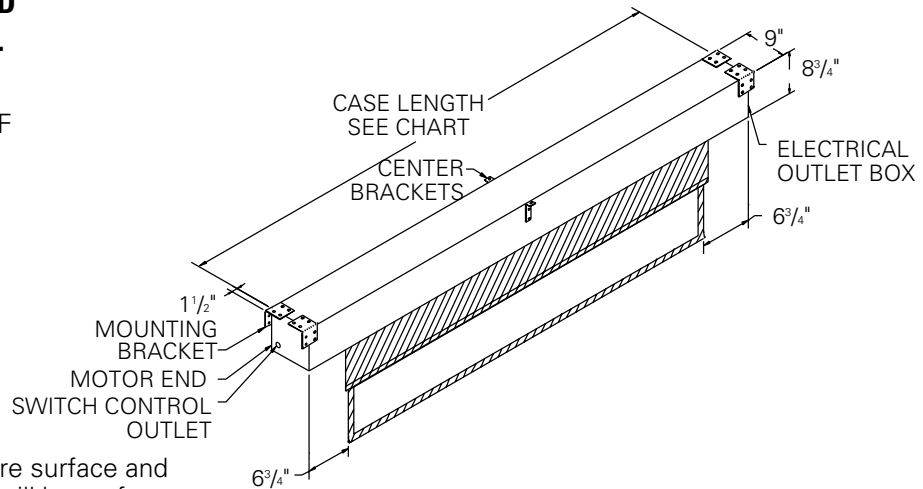
- Extra Drop available to lower picture area more than normal. Specify total drop at top \_\_\_\_\_ (black or white) or at bottom \_\_\_\_\_ (black or white). 11' maximum total surface height including picture area.  
 220 Volt (50 Hz) Motor.  
 Infrared Wireless Remote Control.  
 Radio Frequency Wireless Remote Control.  
 Radio Frequency Range Extender available  
 White box (black standard).  
 Silent Motor.

|             |       |
|-------------|-------|
| Project:    | _____ |
| Architect:  | _____ |
| Phone:      | _____ |
| Contractor: | _____ |
| Phone:      | _____ |
| Supervisor: | _____ |
| Phone:      | _____ |
| Supplier:   | _____ |
| Date:       | _____ |
| Revised:    | _____ |

# HORIZON ELECTROL® SUGGESTED METHODS OF INSTALLATION

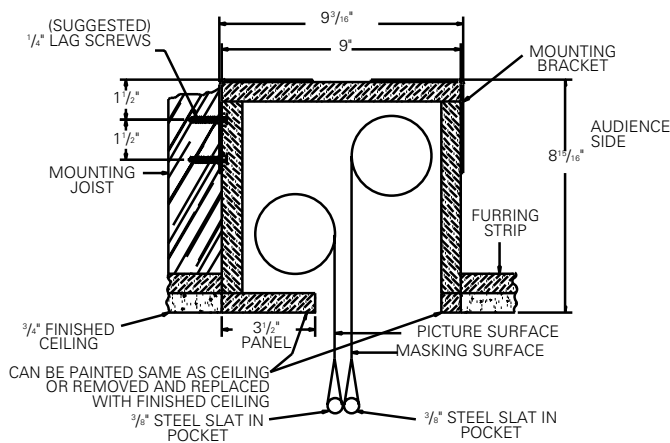
## SELECT INSTALLATION METHOD ACCORDING TO CEILING TYPE.

**NOTE:**  
MUST MARK HOLE LOCATION OF  
SCREWS IN 3 1/2" PANEL FOR  
REMOVAL, IF COVERING WITH  
TILE.



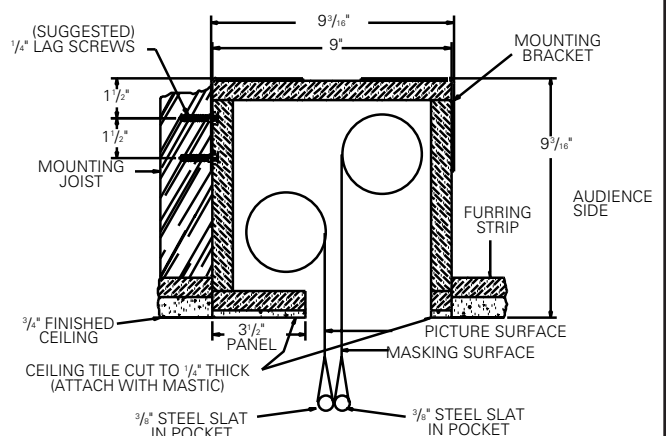
**NOTE:** Drawings below show picture surface and mask in the down position. Mask will be on front side of roller when retracted.

### METHOD A



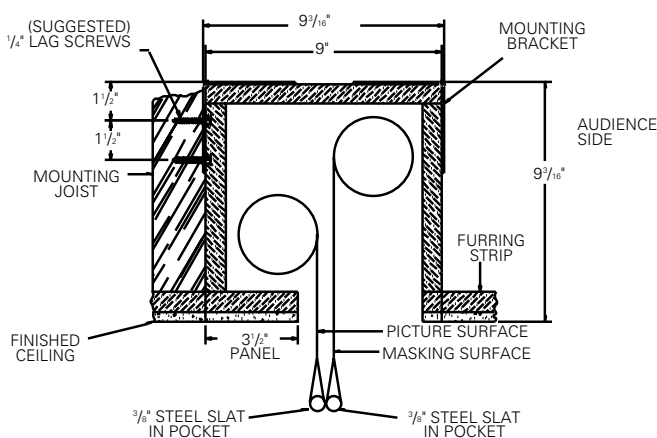
Offset mounting, recessed above ceiling. For plaster, dry wall, tile or paneling. Bottom of case painted same finish as ceiling.

### METHOD B



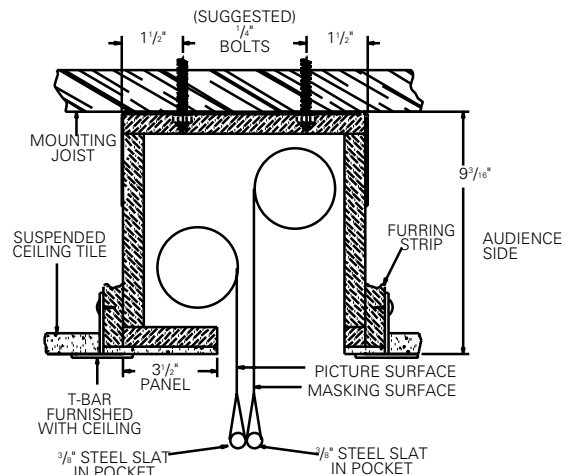
Offset mounting, recessed above ceiling. May be adapted for 3/4" ceiling, but cut to 1/4" thick under screen case and panel.

### METHOD C



Offset mounting, recessed above ceiling. May be adapted for 1/4" paneling for ceiling.

### METHOD D



Flush mounting, recessed above ceiling. For use with dropped ceiling. May also be adapted for use with acoustical or other ceiling 3/4" thick but cut to 1/4" thick under screen case and panel.



# TENSIONED HORIZON ELECTROL®

Automatic Electric Projection Screen Model

## SPECIFICATION DATA

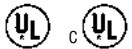
**DA-LITE SCREEN COMPANY, INC.**  
 3100 North Detroit Street  
 Post Office Box 137  
 Warsaw, Indiana 46581-0137  
 Phone: 574-267-8101  
 800-622-3737  
 Fax: 574-267-7804  
 Toll Free Fax: 877-325-4832  
 www.da-lite.com  
 e-mail: info@da-lite.com

**SUGGESTED SPECIFICATIONS:** \_\_\_\_\_ projection screen(s), \_\_\_\_\_ (H) x \_\_\_\_\_ (W), electrically operated 120 volt (60 Hz) not more than 2.2 amp. Shall have two specially designed motors mounted inside two rollers, to be three wire with ground quick reversal type, oiled for life, with automatic thermal overload cutout, integral gears, capacitor, embedded microprocessor control and an electric brake to prevent coasting. To have preset but adjustable limit switches to automatically stop the picture surfaces in the "up" and "down" positions. Shall have electronic controller to adjust to three intermediate positions. The fabric roller to be of rigid aluminum. The mask roller to be of rigid aluminum. Screen fabric to be seamless, flame-retardant and mildew resistant vinyl with black masking borders standard. Each side of the fabric to have tab guide cable system to maintain even lateral tension and hold surface flat. To have masking fabric to convert the screen to different aspect ratios. Custom slat bar with added weight maintains vertical tension on the screen surface. The ends of the aluminum slat to be protected by heavy-duty plastic caps enclosing a preset adjustable mechanism for screen tensioning. Bottom of the masking fabric shall be sewn into a pocket holding a metal rod. Case to be of wood and be finished with a black primer coat, ready to accept final finish by others. To be complete with a six-button switch with a cover plate. Screen to be listed by Underwriters' Laboratories.

All viewing surfaces will be seamless.

All viewing surfaces are standard with black backing except Da-Tex® and Dual Vision.

Audio Vision, High Contrast Audio Vision and High Contrast Cinema Perf available in sizes up to 87" x 116" in Video Format.



### NTSC (1.33:1) NATIVE ASPECT RATIO DIMENSIONS

| Viewing Area H x W |           |             |           |                  |           |   |           | *Overall Length of Case           |     | Approx. Ship. Wt. |      |
|--------------------|-----------|-------------|-----------|------------------|-----------|---|-----------|-----------------------------------|-----|-------------------|------|
| NTSC (1.33)        |           | HDTV (1.78) |           | Letterbox (1.85) |           | Cinemascope (2.35)                      |           |                                   |     |                   |      |
| In.                | Cm        | In.         | Cm        | In.              | Cm        | In.                                     | Cm        | In.                               | Cm. | Lbs.              | Kg.  |
| 43" x 57"          | 109 x 145 | 32" x 57"   | 81 x 145  | 31" x 57"        | 79 x 145  | 24" x 57"                               | 61 x 145  | 79 <sup>3</sup> / <sub>4</sub> "  | 203 | 87                | 39.5 |
| 50" x 67"          | 127 x 170 | 38" x 67"   | 97 x 170  | 36" x 67"        | 91 x 170  | 29" x 67"                               | 74 x 170  | 90 <sup>3</sup> / <sub>4</sub> "  | 231 | 101               | 45.8 |
| 60" x 80"          | 152 x 203 | 45" x 80"   | 114 x 203 | 43" x 80"        | 109 x 203 | 34" x 80"                               | 86 x 203  | 104 <sup>3</sup> / <sub>4</sub> " | 266 | 121               | 54.9 |
| 69" x 92"          | 175 x 234 | 52" x 92"   | 132 x 234 | 50" x 92"        | 127 x 234 | 39" x 92"                               | 99 x 234  | 118 <sup>3</sup> / <sub>4</sub> " | 302 | 138               | 62.6 |
| 87" x 116"         | 221 x 295 | 65" x 116"  | 165 x 295 | 63" x 116"       | 160 x 295 | 49 <sup>1</sup> / <sub>2</sub> " x 116" | 126 x 295 | 145 <sup>3</sup> / <sub>4</sub> " | 370 | 177               | 80.3 |
| 108" x 144"        | 274 x 366 | 81" x 144"  | 206 x 366 | 78" x 144"       | 198 x 366 | 61" x 144"                              | 155 x 366 | 170 <sup>3</sup> / <sub>4</sub> " | 434 | 198               | 89.8 |

### HDTV (1.78:1) NATIVE ASPECT RATIO DIMENSIONS

| Viewing Area H x W |           |                  |           |   |           | *Overall Length of Case           |     | Approx. Ship. Wt. |      |
|--------------------|-----------|------------------|-----------|---|-----------|-----------------------------------|-----|-------------------|------|
| HDTV (1.78)        |           | Letterbox (1.85) |           | Cinemascope (2.35)                      |           |                                   |     |                   |      |
| In.                | Cm        | In.              | Cm        | In.                                     | Cm        | In.                               | Cm. | Lbs.              | Kg.  |
| 32" x 57"          | 81 x 145  | 31" x 57"        | 79 x 145  | 24" x 57"                               | 61 x 145  | 78 <sup>3</sup> / <sub>4</sub> "  | 200 | 87                | 39.5 |
| 38" x 67"          | 97 x 170  | 36" x 67"        | 91 x 170  | 29" x 67"                               | 74 x 170  | 89 <sup>3</sup> / <sub>4</sub> "  | 228 | 101               | 45.8 |
| 45" x 80"          | 114 x 203 | 43" x 80"        | 109 x 203 | 34" x 80"                               | 86 x 203  | 103 <sup>3</sup> / <sub>4</sub> " | 264 | 121               | 54.9 |
| 52" x 92"          | 132 x 234 | 50" x 92"        | 127 x 234 | 39" x 92"                               | 99 x 234  | 115 <sup>3</sup> / <sub>4</sub> " | 294 | 138               | 62.6 |
| 65" x 116"         | 165 x 295 | 63" x 116"       | 160 x 295 | 49 <sup>1</sup> / <sub>2</sub> " x 116" | 126 x 295 | 141 <sup>3</sup> / <sub>4</sub> " | 360 | 177               | 80.3 |
| 81" x 144"         | 206 x 366 | 78" x 144"       | 198 x 366 | 61" x 144"                              | 155 x 366 | 167 <sup>3</sup> / <sub>4</sub> " | 426 | 198               | 89.8 |

\*Add 3" overall length of case for mounting brackets.

Overall case length dimensions ±1/4".

All sizes come standard with 12" black drop at top.

Extra drop may alter case dimensions. Contact Da-Lite for details.

Detail dimensional drawings, wiring diagrams and installation instructions available upon request.

Specifications subject to change without notice.

Custom formats and sizes available upon request.

### WHEN ORDERING MARK APPROPRIATE SELECTIONS:

Select size from chart above.

#### Viewing surface:

- |   |  |
|---|--|
| <input type="checkbox"/> Da-Mat®                    | <input type="checkbox"/> Pearlescent                 |
| <input type="checkbox"/> Audio Vision               | <input type="checkbox"/> Cinema Vision               |
| <input type="checkbox"/> High Contrast Da-Mat®      | <input type="checkbox"/> High Contrast Cinema Vision |
| <input type="checkbox"/> High Contrast Audio Vision | <input type="checkbox"/> High Contrast Cinema Perf   |
| <input type="checkbox"/> Da-Tex® (Rear)             | <input type="checkbox"/> Dual Vision                 |

#### Optional Accessories:

- 220 Volt (50Hz) Motor.
- Infrared Wireless Remote Control.
- Radio Frequency Wireless Remote Control.
  - Radio Frequency Range Extender available
- White box (black standard).
- Silent Motor.

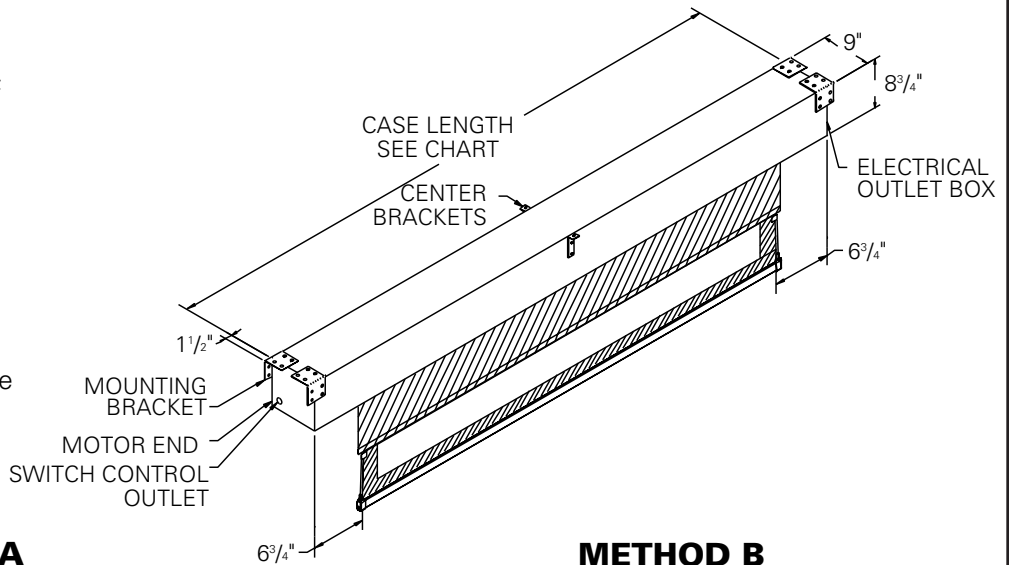
|             |       |
|-------------|-------|
| Project:    | _____ |
| Architect:  | _____ |
| Phone:      | _____ |
| Contractor: | _____ |
| Phone:      | _____ |
| Supervisor: | _____ |
| Phone:      | _____ |
| Supplier:   | _____ |
| Date:       | _____ |
| Revised:    | _____ |

# TENSIONED HORIZON ELECTROL® METHODS OF INSTALLATION

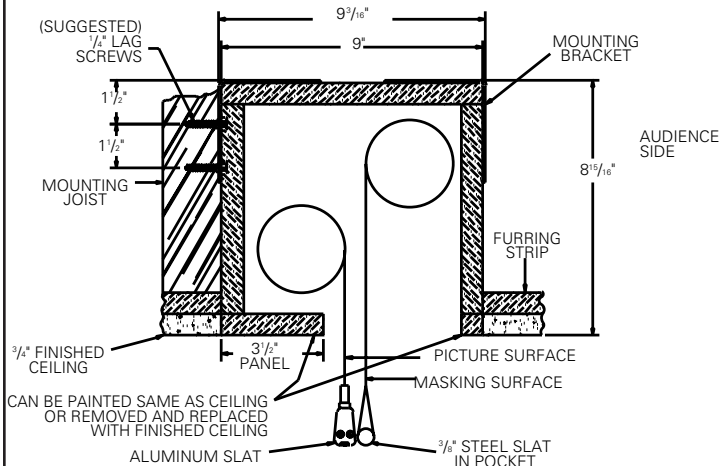
## SELECT INSTALLATION METHOD ACCORDING TO CEILING TYPE.

**NOTE:**  
MUST MARK HOLE LOCATION OF  
SCREWS IN 3 1/2" PANEL FOR  
REMOVAL, IF COVERING WITH  
TILE.

**NOTE:** Drawings below show picture  
surface and mask in the down  
position. Mask will be on front side  
of roller when retracted.

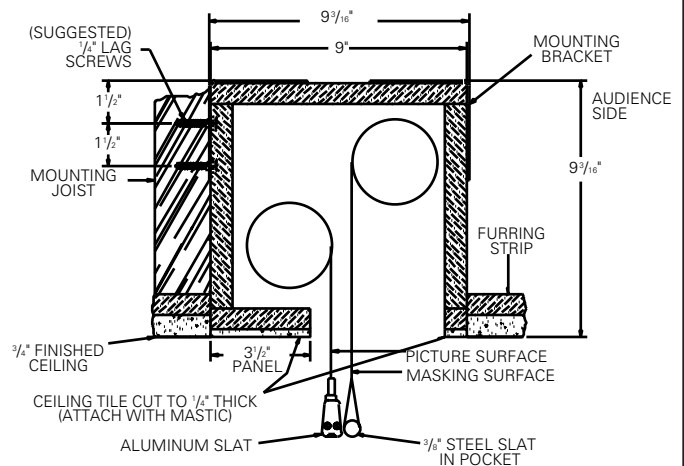


### METHOD A



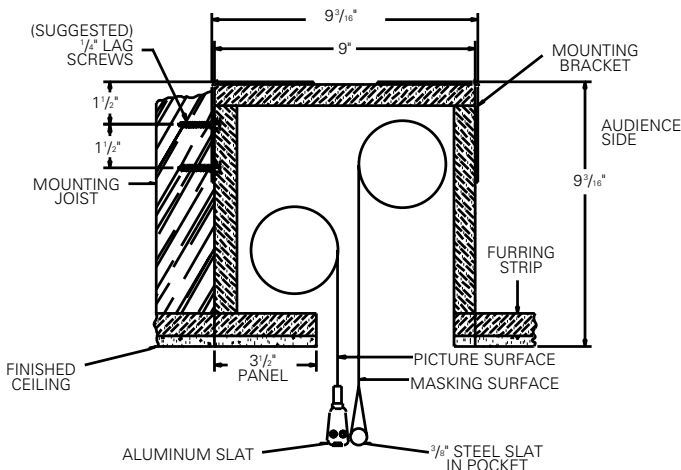
Offset mounting, recessed above ceiling. For plaster, dry wall, tile or paneling. Bottom of case painted same finish as ceiling.

### METHOD B



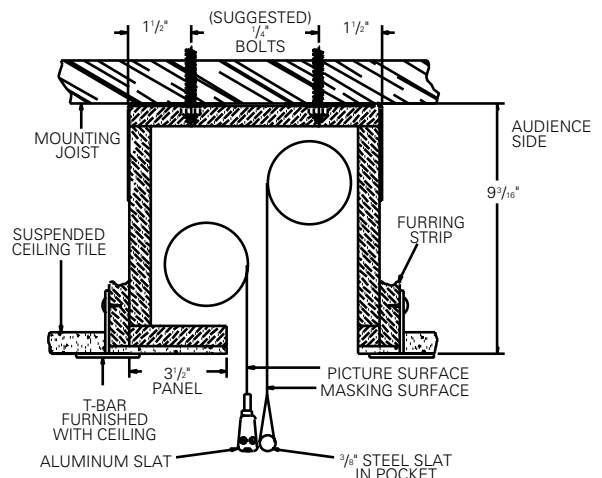
Offset mounting, recessed above ceiling. May be adapted for 3/4" ceiling, but cut to 1/4" thick under screen case and panel.

### METHOD C



Offset mounting, recessed above ceiling. May be adapted for 1/4" paneling for ceiling.

### METHOD D



Flush mounting, recessed above ceiling. For use with dropped ceiling. May also be adapted for use with acoustical or other ceiling 3/4" thick but cut to 1/4" thick under screen case and panel.