

Interactive Document Camera

AVerVision 300AF

Sharpen Your Focus





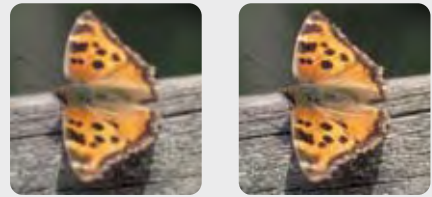
Accuracy and Precision

Equipped with an Auto Focus 3.2 Mega pixel camera, the AVerVision300AF provides exceptional image quality and functionality. Through AVerVision300AF, presenters can instantly project out any pictures, documents or 3D objects. Without the hassle of copying or scanning, the "larger than life" documents or objects can catch people's attention and help everyone to stay focused on the presentation. The high quality 3.2 Mega pixel camera with 16X total zoom is able to clearly show details of a fine art or various kinds of images. The high-speed 24 frames per second video capture can deliver fluid videos and thus make it possible to display vivid motions when performing circuit soldering or demonstrating animal dissection. In addition, the built-in memory allows presenters to capture and save up to 80 JPEG images for future reference or comparison. The remarkable AVerVision300AF certainly is a great assistant to help deliver messages effectively in any presentation.



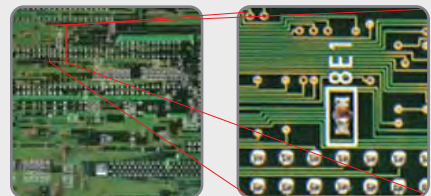
Instant Auto Focus

Auto Focus saves time from the hassle in focusing the camera. The AVerVision300AF's fast Auto Focus allow users to make instant and accurate focal adjustment which can be a valuable tool for people like teachers wherein minimal setup time is very important.



Unique AVERZOOM™ Technology

AVERZOOM™, the patented technology of AVerMedia, not only offers equivalent optical zoom quality, furthermore it provides a pan capability to let presenter to move the focused sections. The combination of AVERZOOM™ and digital zoom enrich the experience in presenting small elements of a science experiment, or to clearly show complicated mathematical formulas in a simple and effective way.



Seamless Live Video

The high 24 frames per second reduces blur or distortion significantly, which allow users to demonstrate proper handwriting, portrait painting, or dissecting frog under the camera while maintaining exceptional video clarity.



Patented Laser Positioning Guide

AVerVision300AF is designed to be more convenient for users. The patented Laser Positioning Guide remarkably indicates the viewing area that aids the presenter in positioning the object under the camera.



Friendlier Software

The bundled AVerVision software is revamped for easier control while collaborating with interactive whiteboards during presentations. The enhanced USB data transmission rate significantly reduces image blur or distortion when users perform a live demo or use the Annotation tools to add notes, overlay text, lines, shapes, and highlight important details. In addition, the Networking feature allows users to access and remotely control document cameras in the local area network (LAN) to facilitate cross-room discussion and sharing. This new software also makes it possible for users to remotely observe experiments. Combined with the Continuous Capture function, user can capture observation images successively in the preferred time intervals and then save directly onto their PC or MAC. This way, users can effortlessly observe their experiments even when they are not in the lab!

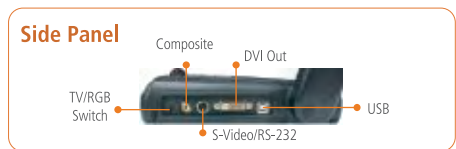
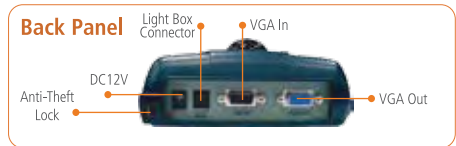




AVerVision300AF

Product Specifications	
Image Sensor	1/2" CMOS
Total Pixels	3.2M Pixels
Output Resolution	XGA (1024 x 768) (Max.)
Zoom	16X Total Zoom (2X AVERZOOM™ + 8X Digital Zoom)
Focus	Auto/Manual
Frame Rate	24fps (Max.)
Image Rotation	0°/90°/ 180°/ 270°
Shooting Area	320mm X 240mm
Image Storage	Built-in Memory (Max: 80)
Image Effect	Color/ B&W/ Negative/ Mirror/ Freeze
Image Adjust. (White Balance/Exposure/Night View)	Auto/ Manual
Display Mode	Text/ Graphics/ High Frame/ Microscope
Timer	Provided
Flicker Filter Control	2 Levels
Remote Control	Provided
DVI-H Output	Provided
VGA Input/Output	Provided (15-Pins D-sub, Pass Through)
S-Video, Composite Video Output	Provided (NTSC or PAL)
RS-232 Port	Provided (With S-Video/RS-232 Adapter Cable)
USB 2.0 Port	Provided (PC Camera/ Built-in Image Download)
Light Source	LED Lamp
Laser Positioning Guide	Provided
Dimension	Operating: 424mm x 173.4mm x 330mm Folded: 365mm x 173.4mm x 98.85mm
Net Weight	2Kg (about 4.4lb)
Power Source	AC/DC 100-240V, 50-60 Hz
Warranty	3 Year Limited Parts and Labor ¹
Certifications	FCC, CE, FDA 21
Compatible Operating System	
Windows®	2000 (SP4), XP (SP2), Vista (32-bit or 64-bit)
Macintosh®	OS 10.3 (Panther), OS 10.4 (Tiger), OS 10.5 (Leopard)
Package Content	
AVerVision300AF	S-Video/ RS-232 Adapter Cable
Power Adapter & Cord	Remote Control With Batteries
VGA Cable	Carrying Bag
S-Video Cable	User Manual
USB Cable	AVerVision Software CD
RCA Cable	Warranty Card
Detachable LED Lamp (With Laser Positioning Guide)	Anti-Glare Sheet

* Please refer to warranty card



Optional Accessories



Microscopic Adapter



Light Box

Distributor / Dealer :

