



ADVANTAGE[®] MANUAL with CSR

CONTROLLED SCREEN RETURN

DA-LITE SCREEN COMPANY, INC.
3100 North Detroit Street
Post Office Box 137
Warsaw, Indiana 46581-0137
Phone: 574-267-8101
800-622-3737
Fax: 574-267-7804
Toll Free Fax: 877-325-4832
www.da-lite.com
e-mail: info@da-lite.com

SPECIFICATION DATA

SUGGESTED SPECIFICATIONS: _____ projection screen(s), _____ (H) x _____ (W), recessed ceiling mounting type. To have surface with black masking borders standard on flame retardant and mildew resistant fiberglass fabric, mounted on a ball bearing rigid steel spring roller. To be equipped with Controlled Screen Return (CSR) to control the return speed of the screen surface back into the case. Fabric to be permanently attached to roller. Top, front, and back of case to be made of extruded aluminum. End caps to be of heavy gauge steel. Bottom of case to have a removable access door. Entire case to be powder coated white. Bottom of case to be self-trimming, with a built-in flange around the bottom of the case. Bottom of screen shall be formed into pocket holding tubular metal slat. A steel pull bail shall be attached to the slat. Heavy-duty plastic caps shall protect the ends of the slat. Metal bumper stops shall be built into the case to prevent slat wedging inside case. A 6' pull cord with plastic knob is included. Roller mounting brackets to be adjustable to allow centering or offsetting the screen within the case. Suitable for use in environmental air space in accordance with section 300-22 (c) of the National Electric Code, and sections 2-128, 12-010 (3) and 12-100 of the Canadian Electrical Code, part 1, CSA C22.1.

VIDEO (NTSC 4:3) FORMAT DIMENSIONS

Viewing Area		Nominal Diagonal		Overall Length of Case (does not include flange)		Approx. Ship. Wt.	
H x W	Cm	In.	Cm	In.	Cm	Lbs.	Kg
43" x 57"	109 x 145	72"	183	65 ¹ / ₂ "	166	60	27.2
50" x 67"	127 x 170	84"	213	75 ¹ / ₂ "	192	65	29.5
57" x 77"	145 x 196	96"	244	89 ¹ / ₂ "	227	77	34.9
60" x 80"	152 x 203	100"	254	89 ¹ / ₂ "	227	77	34.9
69" x 92"	175 x 234	120"	305	101 ¹ / ₂ "	258	89	40.4
87" x 116"	221 x 295	150"	381	125 ¹ / ₂ "	319	100	45.4
105" x 140"	267 x 356	180"	457	149 ¹ / ₂ "	380	106	48.1
120" x 160"	305 x 406	200"	508	169 ¹ / ₂ "	430	123	55.8

HDTV (16:9) FORMAT DIMENSIONS

Viewing Area		Nominal Diagonal		Overall Length of Case (does not include flange)		Approx. Ship. Wt.	
H x W	Cm	In.	Cm	In.	Cm	Lbs.	Kg
45" x 80"	114 x 203	92"	234	89 ¹ / ₂ "	227	75	34.0
52" x 92"	132 x 234	106"	269	101 ¹ / ₂ "	258	88	39.9
54" x 96"	137 x 244	110"	279	105 ¹ / ₂ "	268	89	40.4
58" x 104"	147 x 264	119"	302	113 ¹ / ₂ "	288	95	43.1
65" x 116"	165 x 295	133"	338	125 ¹ / ₂ "	319	98	44.5
78" x 139"	198 x 353	159"	404	149 ¹ / ₂ "	380	104	47.2

16:10 WIDE FORMAT DIMENSIONS

Viewing Area		Nominal Diagonal		Overall Length of Case (does not include flange)		Approx. Ship. Wt.	
H x W	Cm	In.	Cm	In.	Cm	Lbs.	Kg
50" x 80"	127 x 203	94"	239	89 ¹ / ₂ "	227	75	34
60" x 96"	152 x 244	113"	287	105 ¹ / ₂ "	268	89	40.4
69" x 110"	175 x 279	130"	330	119 ¹ / ₂ "	304	97	44
87" x 139"	221 x 353	164"	417	149 ¹ / ₂ "	380	104	47.2

SQUARE FORMAT DIMENSIONS

Sizes		Overall Length of Case (does not include flange)		Approx. Ship. Wt.	
H x W	Cm	In.	Cm	Lbs.	Kg
60" x 60"	152 x 152	65 ¹ / ₂ "	166	61	27.7
70" x 70"	178 x 178	75 ¹ / ₂ "	192	68	30.8
84" x 84"	213 x 213	89 ¹ / ₂ "	227	79	35.8
6' x 8'	183 x 244	101 ¹ / ₂ "	258	89	40.4
8' x 8'	244 x 244	101 ¹ / ₂ "	258	91	41.3
7' x 9'	213 x 274	113 ¹ / ₂ "	288	96	43.5
9' x 9'	274 x 274	113 ¹ / ₂ "	288	97	44.0
8' x 10'	244 x 305	125 ¹ / ₂ "	319	100	45.4
10' x 10'	305 x 305	125 ¹ / ₂ "	319	102	46.3
9' x 12'	274 x 366	149 ¹ / ₂ "	380	106	48.1
12' x 12'	366 x 366	149 ¹ / ₂ "	380	119	54.0

Overall case length dimensions $\pm 1/4"$.
Detail dimensional drawings and installation instructions available upon request.

Specifications subject to change without notice.
Custom formats and sizes available upon request.

Matte White: Horizontal seam required when both dimensions exceed 10'.






Video Spectra 1.5 and High Contrast Matte White: Available in sizes where both dimensions do not exceed 8'.

High Power®: Available in sizes up to 9' x 12'. Horizontal seam required when both dimensions exceed 6'.

WHEN ORDERING, MARK APPROPRIATE SELECTIONS:

Select size from charts above.

Select viewing surface:

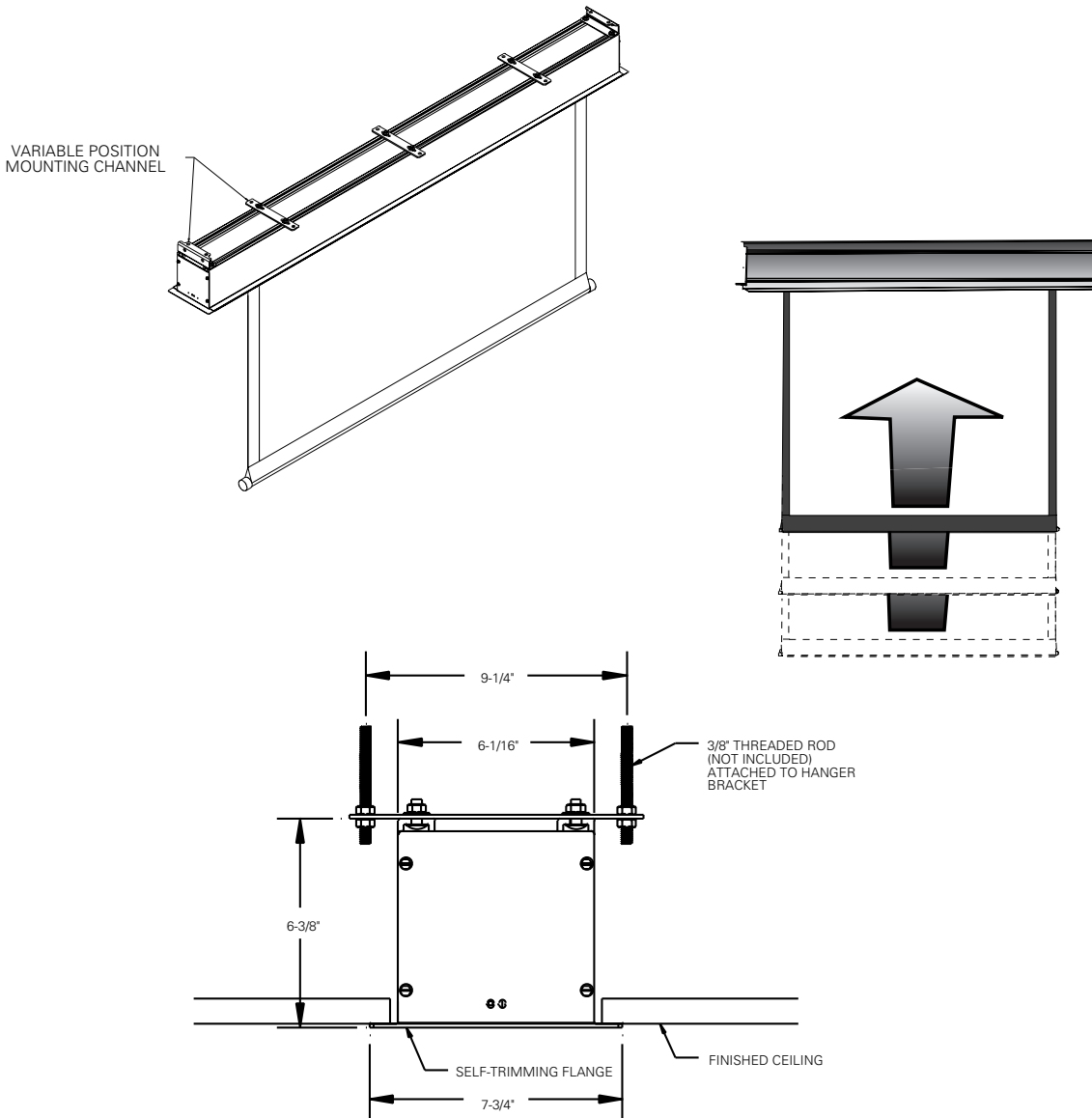
- Matte White 
- High Contrast Matte White 
- Video Spectra 1.5 
- High Power® 
-  Greenguard® and Greenguard® Children and Schools Certified.

Optional Accessories:

- Extra Drop available to lower picture area more than normal. Specify total drop at top ____ (black or white) or at bottom ____ (black or white). 13' maximum total surface height including picture area.
- No Borders (Black masking borders standard).
- Pull Rod - 38".

Project:	_____
Architect:	_____
Phone:	_____
Contractor:	_____
Phone:	_____
Supervisor:	_____
Phone:	_____
Supplier:	_____
Date:	_____
Revised:	_____

ADVANTAGE® MANUAL WITH CSR SUGGESTED METHODS OF INSTALLATION



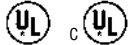


ADVANTAGE® ELECTROL®

Automatic Electric Projection Screen Model
SPECIFICATION DATA

DA-LITE SCREEN COMPANY, INC.
 3100 North Detroit Street
 Post Office Box 137
 Warsaw, Indiana 46581-0137
 Phone: 574-267-8101
 800-622-3737
 Fax: 574-267-7804
 Toll Free Fax: 877-325-4832
 www.da-lite.com
 e-mail: info@da-lite.com

SUGGESTED SPECIFICATIONS: _____ projection screen(s), _____ (H) x _____ (W), electrically operated 120 volt (60Hz), not more than 2.4 amp with a quick connect male plug-in connector on the motor. Shall have specially designed motor mounted inside the roller, to be three wire with ground, quick reversal type, oiled for life, with automatic thermal overload cutout, integral gears, capacitor and an electric brake to prevent coasting. To have preset but adjustable limit switches to automatically stop picture surface in the "up" and "down" positions. Junction box shall be externally integrated into the housing making it possible to install the housing and wire to the building's electrical system during construction. The junction box shall contain a quick connect connector that is mounted in the housing for easy plug-in connection to the motorized fabric and roller assembly. The roller to be of rigid metal. The motorized fabric and roller assembly to be installed in the case at the factory or at a later time at the job site. Roller mounting brackets to be adjustable to allow centering or offsetting of the screen within the case. Screen to be designed for left or right-hand motor installation. Screen fabric to be flame retardant and mildew resistant fiberglass with black masking borders standard. Bottom of fabric shall be formed into a pocket holding a metal rod. Heavy duty plastic caps shall protect the ends of the rod. Top, front and back of case to be made of extruded aluminum powder coated white. End caps to be of heavy gauge steel, powder coated white. Bottom of case to have a removable access door. Door to be of extruded aluminum powder coated white. Bottom of case to be self-trimming, with a built-in flange around the bottom of the case. To be complete with a three-position control switch and cover plate. Suitable for use in environmental air space in accordance with section 300-22 (c) of the National Electric Code, and sections 2-128, 12-010 (3) and 12-100 of the Canadian Electrical Code, part 1, CSA C22.1. Screen to be listed by Underwriters' Laboratories.



VIDEO (NTSC 4:3) FORMAT DIMENSIONS (2" standard black drop at top)

Viewing Area		Nominal Diagonal		Overall Length of Case (does not include flange)		Approx. Ship. Wt.	
H x W	Cm	In.	Cm	In.	Cm	Lbs.	Kg
43" x 57"	109 x 145	72"	183	65 1/2"	166	60	27.2
50" x 67"	127 x 170	84"	213	75 1/2"	192	65	29.5
57" x 77"	145 x 196	96"	244	89 1/2"	227	77	34.9
60" x 80"	152 x 203	100"	254	89 1/2"	227	77	34.9
69" x 92"	175 x 234	120"	305	101 1/2"	258	89	40.4
87" x 116"	221 x 295	150"	381	125 1/2"	319	100	45.4
105" x 140"	267 x 356	180"	457	149 1/2"	380	106	48.1
120" x 160"	305 x 406	200"	508	169 1/2"	431	123	55.8

HDTV (16:9) FORMAT DIMENSIONS (2" standard black drop at top)

Viewing Area		Nominal Diagonal		Overall Length of Case (does not include flange)		Approx. Ship. Wt.	
H x W	Cm	In.	Cm	In.	Cm	Lbs.	Kg
45" x 80"	114 x 203	92"	234	89 1/2"	227	75	34.0
52" x 92"	132 x 234	106"	269	101 1/2"	258	88	39.9
54" x 96"	137 x 244	110"	279	105 1/2"	268	89	40.4
58" x 104"	147 x 264	119"	302	113 1/2"	288	95	43.1
65" x 116"	165 x 295	133"	338	125 1/2"	319	98	44.5
78" x 139"	198 x 353	159"	404	149 1/2"	380	104	47.2
90" x 160"	229 x 406	184"	467	169 1/2"	431	123	55.8

16:10 WIDE FORMAT DIMENSIONS (2" standard black drop at top)

Viewing Area		Nominal Diagonal		Overall Length of Case (does not include flange)		Approx. Ship. Wt.	
H x W	Cm	In.	Cm	In.	Cm	Lbs.	Kg
50" x 80"	127 x 203	94"	239	89 1/2"	227	75	34
60" x 96"	152 x 244	113"	287	105 1/2"	268	89	40.4
69" x 110"	175 x 279	130"	330	119 1/2"	304	97	44
87" x 139"	221 x 353	164"	417	149 1/2"	380	104	47.2

SQUARE FORMAT DIMENSIONS (screens with ^ have 2" standard black drop at top)

Sizes		Overall Length of Case (does not include flange)		Approx. Ship. Wt.	
H x W	Cm	In.	Cm	Lbs.	Kg
50" x 50"	127 x 127	55 1/2"	141	54	24.5
60" x 60"	152 x 152	65 1/2"	166	61	27.7
70" x 70"	178 x 178	75 1/2"	192	68	30.8
84" x 84"	213 x 213	89 1/2"	227	79	35.8
6' x 8'^^	183 x 244	101 1/2"	258	89	40.4
8' x 8'	244 x 244	101 1/2"	258	91	41.3
7' x 9'^^	213 x 274	113 1/2"	288	96	43.5
9' x 9'^^	274 x 274	113 1/2"	288	97	44.0
8' x 10'^^	244 x 305	125 1/2"	319	100	45.4
10' x 10'^^	305 x 305	125 1/2"	319	102	46.3
9' x 12'^^	274 x 366	149 1/2"	380	106	48.1
12' x 12'	366 x 366	149 1/2"	380	119	54.0

Electrical junction box extends 2 1/8" past case length on left end of case (1 1/8" past ceiling flange). Internal junction box available (will add 3 1/2" to overall case length and must be specified at time of order, recommended for drywall installations). Overall case length dimensions ± 1/4". Detail dimensional drawings, wiring diagrams and installation instructions available upon request. Specifications subject to change without notice. Custom formats and sizes available upon request.

- Matte White:** Seamless in all sizes.
- Video Spectra 1.5 and High Contrast Matte White:** Available in sizes where both dimensions do not exceed 8'.
- High Power®:** Available in sizes up to 9' x 12'. Horizontal seam required when both dimensions exceed 6'.

WHEN ORDERING, MARK APPROPRIATE SELECTIONS:

Select size from charts above.

Select viewing surface:

- Matte White
- High Contrast Matte White
- High Power®
- Video Spectra 1.5
- Greenguard® and Greenguard® Children and Schools Certified.

Optional Accessories:

- Extra Drop available to lower picture area more than normal. Specify total drop at top _____ (black or white) or at bottom _____ (black or white). 13' maximum total surface height including picture area.
- Single Motor Low Voltage Control (LVC) - external.
- Single Motor Low Voltage Control (LVC) - built-in.
- Wireless Remote Control for LVC.
 - Radio Frequency Remote.
 - Radio Frequency Range Extender available
 - Infrared Remote.
- Silent Motor for sizes up to 9'x12'.
- Silent Motor with Integrated LVC for sizes up to 9'x12'.
- Key Locking Cover Plate for 120V or LVC Switch.
- Key Operated Switch for 120V only (NOTE: Cannot be used with LVC).
- No Borders (Black masking borders standard).

Project:	_____

Architect:	_____

Phone:	_____

Contractor:	_____

Phone:	_____

Supervisor:	_____

Phone:	_____

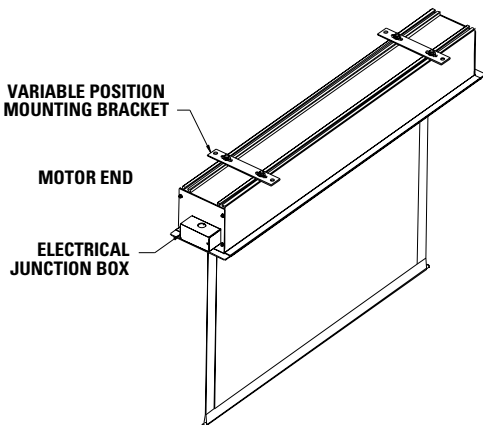
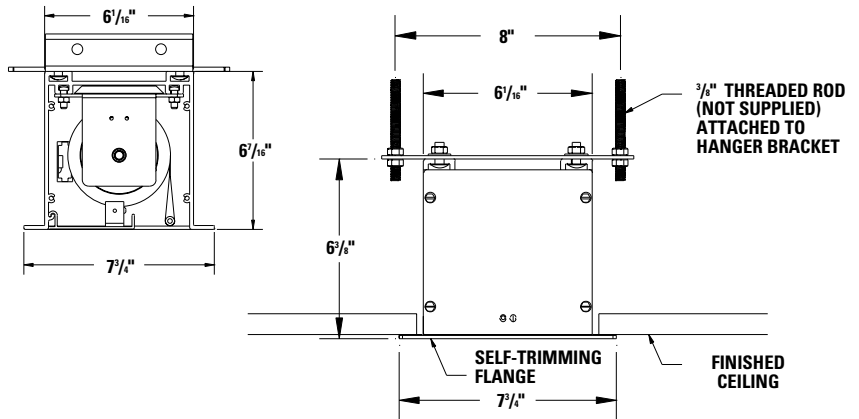
Supplier:	_____

Date:	_____

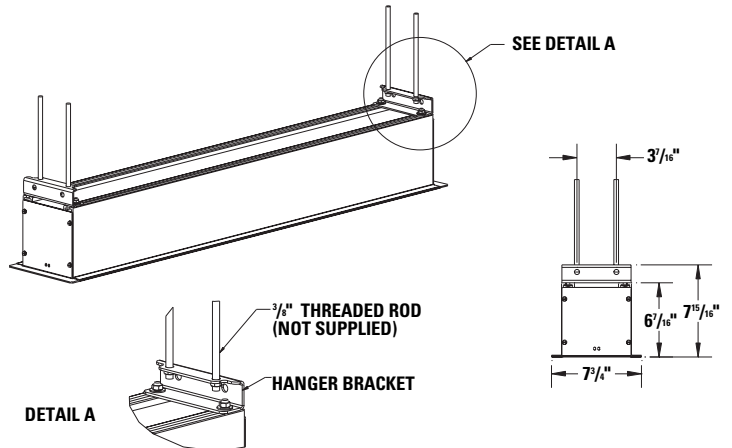
Revised:	_____

- 220 Volt (50 Hz) Motor.
- Video Projector Interface Control - external.
- SCB-100 RS-232 Serial Control Board - external.
 - NET-100 Ethernet-Serial Adapter
- SCB-100 RS-232 Serial Control Board - built-in. (adds 10" to overall length of case)
 - NET-100 Ethernet-Serial Adapter
- SCB-200 RS-232 Serial Control Board - built-in only. (adds 10" to overall length of case)
 - NET-200 Ethernet-Serial Adapter
 - WC-200 Wall Controller
 - IR-200 Infrared Remote

**ADVANTAGE® ELECTROL®
SUGGESTED METHODS OF INSTALLATION**



AUDIENCE SIDE







ADVANTAGE[®] DELUXE ELECTROL[®]

Automatic Electric Projection Screen Model

SPECIFICATION DATA

DA-LITE SCREEN COMPANY, INC.
3100 North Detroit Street
Post Office Box 137
Warsaw, Indiana 46581-0137
Phone: 574-267-8101
800-622-3737
Fax: 574-267-7804
Toll Free Fax: 877-325-4832
www.da-lite.com
e-mail: info@da-lite.com

SUGGESTED SPECIFICATIONS: _____ projection screen(s), _____ (H) x _____ (W). The Advantage[®] Deluxe Screen shall have two motors, one to operate door and one to operate screen. Door motor electrically operated 120 volt (60 Hz) not more than 1.2 amp, mounted inside the roller, to be three wire with ground, quick reversal type, oiled for life, with automatic thermal overload cutout, integral gears, capacitor and an electric brake to prevent coasting. To have pre-set but adjustable limit switches to automatically stop fabric door in the "down" position. The door will lift to the closed position where a micro switch shall cut off the electrical current to the door motor. The roller to be of rigid aluminum. Screen motor is electrically operated 120 volt (60 Hz) not more than 2.4 amp, mounted inside the roller, to be three wire with ground quick reversal type, oiled for life, with automatic thermal overload cutout, integral gears, capacitor and an electric brake to prevent coasting. To have pre-set but adjustable limit switches to automatically stop picture surface in the "up" and "down" positions. The roller to be of rigid metal. Screen fabric to be flame retardant and mildew resistant fiberglass with black masking borders standard. Bottom of fabric shall be formed into a pocket holding a metal rod with plastic caps. Case shall be a white powder coated aluminum extrusion. Bottom of case to be self-trimming with a built-in flange around the bottom of the case. A section of the bottom of the case shall be an aluminum door equipped with concealed hinges so that it opens and closes automatically with the lowering and raising of the picture surface. The balance of the bottom of the case shall be a second hinged aluminum door with manual opening to provide access. Junction box shall be internally integrated into the housing making it possible to install the housing and wire to the building's electrical system during construction. The junction box shall contain a quick connect connector that is mounted in the housing for easy plug-in connection to the motorized fabric and roller assembly. The motorized fabric and roller assembly to be installed in the case at the factory or at a later time at the job site. To be complete with three position control switch with cover plate. Suitable for use in environmental air space in accordance with section 300-22 (c) of the National Electric Code, and sections 2-128, 12-010 (3) and 12-100 of the Canadian Electrical Code, part 1, CSA C22.1. Screen to be listed by Underwriters' Laboratories.  

VIDEO (NTSC 4:3) FORMAT DIMENSIONS (2" standard black drop at top)

Viewing Area		Nominal Diagonal		Overall Length of Case (does not include flange)		Approx. Ship. Wt.	
H x W	Cm	In.	Cm	In.	Cm	Lbs.	Kg
43" x 57"	109 x 145	72"	183	72 ¹ / ₄ "	184	83	37.7
50" x 67"	127 x 170	84"	213	82 ¹ / ₄ "	209	93	42.2
57" x 77"	145 x 196	96"	244	96 ¹ / ₄ "	244	108	49.0
60" x 80"	152 x 203	100"	254	96 ¹ / ₄ "	244	108	49.0
69" x 92"	175 x 234	120"	305	108 ¹ / ₄ "	275	119	54.0
87" x 116"	221 x 295	150"	381	132 ¹ / ₄ "	336	144	65.3
105" x 140"	267 x 356	180"	457	156 ¹ / ₄ "	397	168	76.2
120" x 160"	305 x 406	200"	508	176 ¹ / ₄ "	448	188	85.3

HDTV (16:9) FORMAT DIMENSIONS (2" standard black drop at top)

Viewing Area		Nominal Diagonal		Overall Length of Case (does not include flange)		Approx. Ship. Wt.	
H x W	Cm	In.	Cm	In.	Cm	Lbs.	Kg
45" x 80"	114 x 203	92"	234	96 ¹ / ₄ "	244	108	49.0
52" x 92"	132 x 234	106"	269	108 ¹ / ₄ "	275	119	54.0
54" x 96"	137 x 244	110"	279	112 ¹ / ₄ "	285	120	54.4
58" x 104"	147 x 264	119"	302	120 ¹ / ₄ "	305	122	55.3
65" x 116"	165 x 295	133"	338	132 ¹ / ₄ "	336	144	65.3
78" x 139"	198 x 353	159"	404	156 ¹ / ₄ "	397	188	85.3
90" x 160"	229 x 406	184"	467	176 ¹ / ₄ "	448	188	85.3

16:10 WIDE FORMAT DIMENSIONS (2" standard black drop at top)

Viewing Area		Nominal Diagonal		Overall Length of Case (does not include flange)		Approx. Ship. Wt.	
H x W	Cm	In.	Cm	In.	Cm	Lbs.	Kg
50" x 80"	127 x 203	94"	239	96 ¹ / ₄ "	244	108	49.0
60" x 96"	152 x 244	113"	287	112 ¹ / ₄ "	285	120	54.4
69" x 110"	175 x 279	130"	330	126 ¹ / ₄ "	321	133	60.3
87" x 139"	221 x 353	164"	417	156 ¹ / ₄ "	397	188	85.3

SQUARE FORMAT DIMENSIONS (screens with ^ have 2" standard black drop at top)

Sizes		Overall Length of Case (does not include flange)		Approx. Ship. Wt.	
H x W	Cm	In.	Cm	Lbs.	Kg
50" x 50"	127 x 127	62 ¹ / ₄ "	158	71	32.2
60" x 60"	152 x 152	72 ¹ / ₄ "	184	81	36.7
70" x 70"	178 x 178	82 ¹ / ₄ "	209	92	41.7
84" x 84"	213 x 213	96 ¹ / ₄ "	244	107	48.5
6' x 8'^	183 x 244	108 ¹ / ₄ "	275	111	50.4
8' x 8'	244 x 244	108 ¹ / ₄ "	275	117	53.1
7' x 9'^	213 x 274	120 ¹ / ₄ "	305	122	55.3
9' x 9'^	274 x 274	120 ¹ / ₄ "	305	130	59.0
8' x 10'^	244 x 305	132 ¹ / ₄ "	336	142	64.4
10' x 10'^	305 x 305	132 ¹ / ₄ "	336	170	77.1
9' x 12'^	274 x 366	156 ¹ / ₄ "	397	180	81.7
12' x 12'	366 x 366	156 ¹ / ₄ "	397	200	90.7

Overall case length dimensions $\pm 1/4"$.
 Detail dimensional drawings, wiring diagrams and installation instructions available upon request.

Specifications subject to change without notice.
 Custom formats and sizes available upon request.

Matte White: Horizontal seam required when both dimensions exceed 10'.

Video Spectra 1.5 and High Contrast Matte White: Available in sizes where both dimensions do not exceed 8'.

High Power®: Available in sizes up to and including 9' x 12'. Horizontal seam required when both dimensions exceed 6'.

WHEN ORDERING, MARK APPROPRIATE SELECTIONS:

Select size from charts on the other side.

Select viewing surface:

- Matte White 
- High Contrast Matte White 
- High Power® 
- Video Spectra 1.5 

 Greenguard® and Greenguard® Children and Schools Certified.

Optional Accessories:

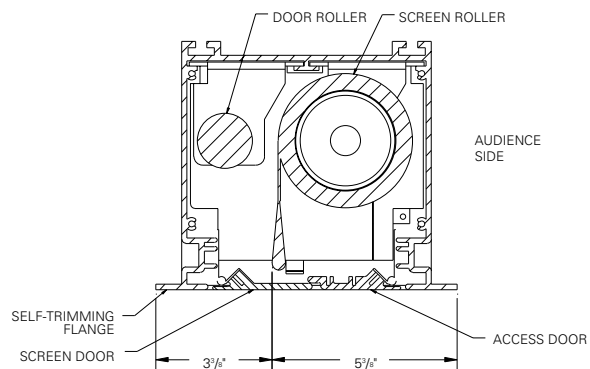
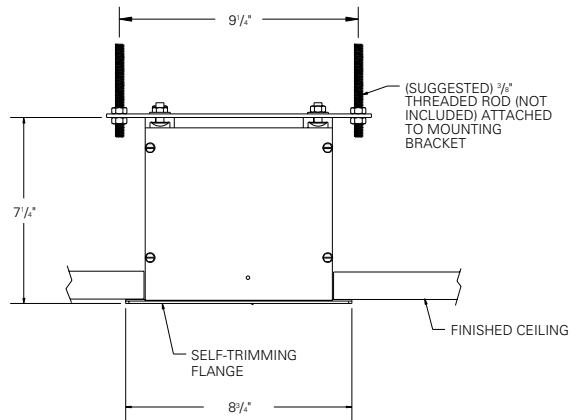
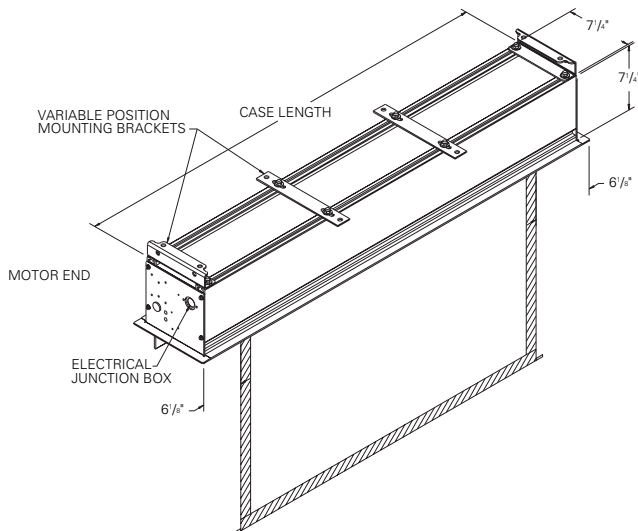
- Extra Drop available to lower picture area more than normal. Specify total drop at top _____ (black or white) or at bottom _____ (black or white). 13' maximum total surface height including picture area.
- No borders (Black masking borders standard).
- Single motor Low Voltage Control(LVC) - external.
- Single motor Low Voltage Control(LVC) - built-in.
- Wireless Remote Control for LVC.
 - Radio Frequency Remote
 - Radio Frequency Range Extender available
 - Infrared Remote
- Key Locking Cover Plate for 120 V Switch or LVC.
- Key Operated Switch for 120 V only (NOTE: Cannot be used with LVC).
- 220/240 Volt (50 Hz) Motor.
- Video Projector Interface - external.
- SCB-100 RS-232 Serial Control Board - external.
 - NET-100 Ethernet-Serial Adapter

Project:	_____

Architect:	_____
Phone:	_____
Contractor:	_____
Phone:	_____
Supervisor:	_____
Phone:	_____
Supplier:	_____
Date:	_____
Revised:	_____

- SCB-100 RS-232 Serial Control Board - built in. Electrical connections will be on right end of screen case on units with built-in SCB-100.
 - NET-100 Ethernet-Serial Adapter
- SCB-200 RS-232 Serial Control Board - built-in. Electrical connections will be on right end of screen case on units with built-in SCB-200.
 - NET-200 Ethernet-Serial Adapter
 - WC-200 Wall Controller
 - IR-200 Infrared Remote

**ADVANTAGE® DELUXE ELECTROL®
 SUGGESTED CEILING INSTALLATION**





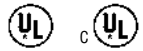
TENSIONED ADVANTAGE® ELECTROL®

Automatic Electric Projection Screen Model

DA-LITE SCREEN COMPANY, INC.
3100 North Detroit Street
Post Office Box 137
Warsaw, Indiana 46581-0137
Phone: 574-267-8101
800-622-3737
Fax: 574-267-7804
Toll Free Fax: 877-325-4832
www.da-lite.com
e-mail: info@da-lite.com

SPECIFICATION DATA

SUGGESTED SPECIFICATIONS: _____ projection screen(s), _____ (H) x _____ (W), electrically operated 120 volt (60 Hz) not more than 2.4 amp. with a quick connect male plug-in connector on the motor. Shall have specially designed motor mounted inside the roller, to be three wire with ground, quick reversal type, oiled for life, with automatic thermal overload cutout, integral gears, capacitor and an electric brake to prevent coasting. To have preset but adjustable limit switches to automatically stop picture surface in the "up" and "down" positions. Junction box shall be externally integrated into the housing making it possible to install the housing and wire to the building's electrical system during construction. The junction box shall contain a quick connect connector that is mounted in the housing for easy plug-in connection to the motorized fabric and roller assembly. The motorized fabric and roller assembly to be installed in the case at the factory or at a later time at the job site. The fabric roller to be of rigid aluminum. Screen to be designed for left or right-hand motor installation. Screen fabric to be seamless, flame retardant and mildew resistant vinyl with black masking borders standard. Each side of the fabric to have tab guide cable system to maintain even lateral tension and hold surface flat. Custom slat bar with added weight maintains vertical tension on the screen surface. The ends of the slat to be protected by heavy duty plastic caps enclosing a preset adjustable mechanism for screen tensioning. Top, front and back of case to be made of extruded aluminum powder coated white. End caps to be of heavy gauge steel powder coated white. Bottom of case to have a removable access door. Door to be of extruded aluminum powder coated white. Bottom of case to be self-trimming, with a built-in flange around the bottom of the case. To be completed with a three-position control switch and cover plate. Suitable for use in environmental air space in accordance with section 300-22 (c) of the National Electric Code, and sections 2-128, 12-010 (3) and 12-100 of the Canadian Electrical Code, part 1, CSA C22.1. Screen to be listed by Underwriters' Laboratories.



VIDEO (NTSC 4:3) FORMAT DIMENSIONS

Viewing Area		Nominal Diagonal		Overall Length of Case (does not include flange)		Approx. Ship. Wt.	
H x W	Cm	In.	Cm	In.	Cm	Lbs.	Kg
43" x 57"	109 x 145	72"	183	72 ¹ / ₂ "	184	77	34.9
50" x 67"	127 x 170	84"	213	83 ¹ / ₂ "	212	86	39.0
60" x 80"	152 x 203	100"	254	97 ¹ / ₂ "	248	98	44.5
69" x 92"	175 x 234	120"	305	111 ¹ / ₂ "	283	111	50.3
87" x 116"	221 x 295	150"	381	138 ¹ / ₂ "	352	135	61.2
108" x 144"	274 x 366	180"	457	163 ¹ / ₂ "	415	151	68.5
120" x 160"	305 x 406	200"	508	180 ¹ / ₂ "	458	169	76.7

HDTV (16:9) FORMAT DIMENSIONS

Viewing Area		Nominal Diagonal		Overall Length of Case (does not include flange)		Approx. Ship. Wt.	
H x W	Cm	In.	Cm	In.	Cm	Lbs.	Kg
45" x 80"	114 x 203	92"	234	96"	244	92	41.7
52" x 92"	132 x 234	106"	269	108 ¹ / ₂ "	276	99	44.9
54" x 96"	137 x 244	110"	279	113"	287	104	47.2
58" x 104"	147 x 264	119"	302	121 ¹ / ₂ "	309	114	51.7
65" x 116"	165 x 295	133"	338	134 ¹ / ₂ "	342	135	61.2
78" x 139"	198 x 353	159"	404	159 ¹ / ₂ "	405	148	67.1
90" x 160"	229 x 406	184"	467	177 ¹ / ₄ "	450	169	76.8

16:10 WIDE FORMAT DIMENSIONS

Viewing Area		Nominal Diagonal		Overall Length of Case (does not include flange)		Approx. Ship. Wt.	
H x W	Cm	In.	Cm	In.	Cm	Lbs.	Kg
50" x 80"	127 x 203	94"	239	96 ¹ / ₂ "	245	92	41.7
60" x 96"	152 x 244	113"	287	114"	290	104	47.2
69" x 110"	175 x 279	130"	330	129"	328	125	56.7
87" x 139"	221 x 353	164"	417	156 ¹ / ₂ "	398	148	67.1

SQUARE FORMAT DIMENSIONS

Sizes		Overall Length of Case (does not include flange)		Approx. Ship. Wt.	
H x W	Cm	In.	Cm	Lbs.	Kg
50" x 50"	127 x 127	66 ¹ / ₂ "	169	70	31.8
60" x 60"	152 x 152	77 ¹ / ₂ "	197	80	36.3
70" x 70"	178 x 178	89"	226	90	40.8
84" x 84"	213 x 213	105 ¹ / ₂ "	268	104	47.2
6' x 8'	183 x 244	115 ¹ / ₂ "	293	114	51.7
8' x 8'	244 x 244	119"	302	116	52.6
7' x 9'	213 x 274	129 ¹ / ₂ "	329	126	57.2
9' x 9'	274 x 274	128"	325	124	56.2
8' x 10'	244 x 305	143"	363	132	59.9
10' x 10'	305 x 305	140"	356	135	61.2
9' x 12'	274 x 366	163 ¹ / ₂ "	415	151	68.5
12' x 12'	366 x 366	168 ¹ / ₂ "	428	156	70.8

All screens standard with 12" black drop at the top.

Extra drop may alter case dimensions. Contact Da-Lite for details.
 Electrical junction box extends 2 1/8" past case length on left end of case (1 1/8" past mounting flange).
 Internal junction box available (will add 3 1/2" to overall case length and must be specified at time of order, recommended for drywall installations).
 Overall case length dimensions ± 1/4".
 Detail dimensional drawings, wiring diagrams and installation instructions available upon request.
 Specifications subject to change without notice.
 Custom formats and sizes available upon request.

All surfaces will be seamless.

All viewing surfaces are standard with black backing except Da-Tex® and Dual Vision.
Audio Vision, High Contrast Audio Vision and High Contrast Cinema Perf available in sizes up to 87" x 116" in Video format and 78" x 139" in HDTV format.
All screens up to 150" diagonal will be standard with the Silent Motor feature.

WHEN ORDERING, MARK APPROPRIATE SELECTIONS:

Select size from charts above.

Select viewing surface:

- | | |
|---|--|
| <input type="checkbox"/> Da-Mat® | <input type="checkbox"/> Cinema Vision |
| <input type="checkbox"/> High Contrast Da-Mat® | <input type="checkbox"/> High Contrast Cinema Vision |
| <input type="checkbox"/> Audio Vision | <input type="checkbox"/> High Contrast Cinema Perf |
| <input type="checkbox"/> High Contrast Audio Vision | <input type="checkbox"/> Dual Vision |
| <input type="checkbox"/> Pearlescent | <input type="checkbox"/> Da-Tex® (Rear) |

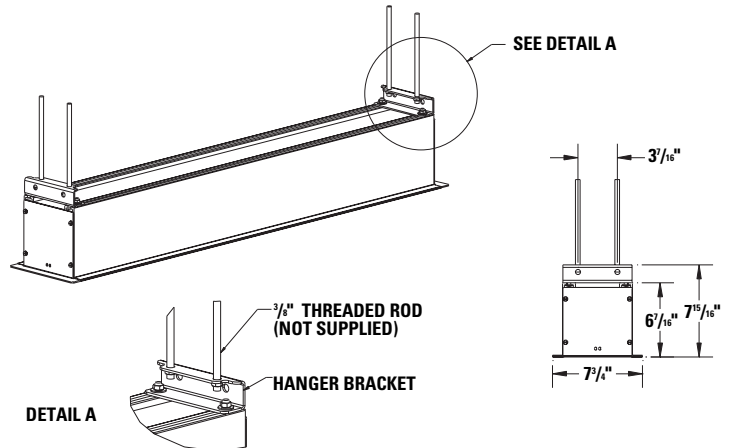
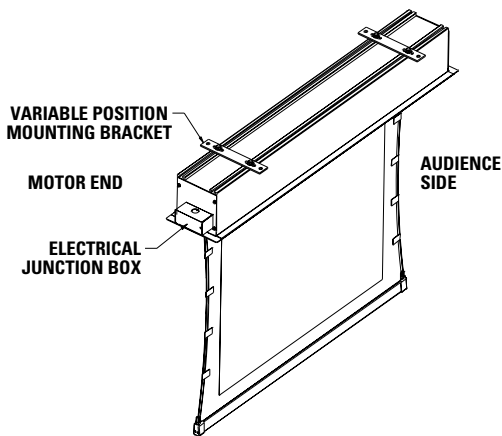
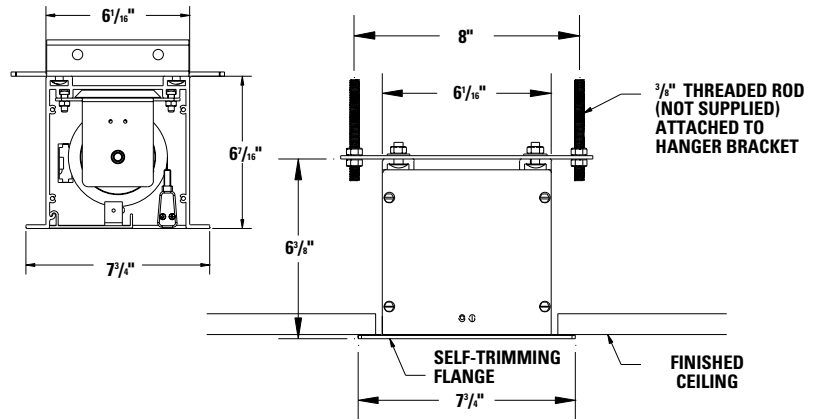
Options:

- Single Motor Low Voltage Control (LVC) - external.
- Single Motor Low Voltage Control (LVC) - built-in.
- Wireless Remote Control for LVC.
 - Radio Frequency Remote.
 - Radio Frequency Range Extender available
 - Infrared Remote.
- Key Locking Cover Plate for 120V or LVC Switch.
- Key Operated Switch for 120V only (NOTE: Cannot be used with LVC).
- 220 Volt (50 Hz) Motor.
- Video Projector Interface Control - external.

Project:	_____
Architect:	_____
Phone:	_____
Contractor:	_____
Phone:	_____
Supervisor:	_____
Phone:	_____
Supplier:	_____
Date:	_____
Revised:	_____

- SCB-100 RS-232 Serial Control Board - external.
 - NET-100 Ethernet-Serial Adapter
- SCB-100 RS-232 Serial Control Board - built-in (adds 10" to overall length of case).
 - NET-100 Ethernet-Serial Adapter
- SCB-200 RS-232 Serial Control Board - built-in (adds 10" to overall length of case).
 - NET-200 Ethernet-Serial Adapter
 - WC-200 Wall Controller
 - IR-200 Infrared Remote

**TENSIONED ADVANTAGE® ELECTROL®
 SUGGESTED METHODS OF INSTALLATION**





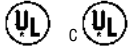
TENSIONED ADVANTAGE® DELUXE ELECTROL®

Automatic Electric Projection Screen Model

SPECIFICATION DATA

DA-LITE SCREEN COMPANY, INC.
3100 North Detroit Street
Post Office Box 137
Warsaw, Indiana 46581-0137
Phone: 574-267-8101
800-622-3737
Fax: 574-267-7804
Toll Free Fax: 877-325-4832
www.da-lite.com
e-mail: info@da-lite.com

SUGGESTED SPECIFICATIONS: _____ projection screen(s), _____(H) x _____ (W). The Tensioned Advantage® Deluxe screen shall have two motors, one to operate door and one to operate screen. Door motor electrically operated 120 volt (60 Hz) not more than 1.2 amp. Shall have motor mounted inside the roller, to be three wire with ground, quick reversal type, oiled for life, with automatic thermal overload cutout, integral gears, capacitor and an electric brake to prevent coasting. To have pre-set but adjustable limit switches to automatically stop fabric door in the "down" position. The door will lift to the closed position where a micro switch shall cut off the electrical current to the door motor. The roller to be of rigid aluminum. Screen motor is electrically operated 120 volt (60 Hz) not more than 2.4 amp. Shall have motor mounted inside the roller, to be three wire with ground quick reversal type, oiled for life, with automatic thermal overload cutout, integral gears, capacitor and an electric brake to prevent coasting. To have pre-set but adjustable limit switches to automatically stop picture surface in the "up" and "down" positions. The roller to be of rigid metal. Screen fabric to be seamless, flame retardant and mildew resistant vinyl, with black masking borders standard. Each side of the fabric to have tab guide cable system to maintain even lateral tension and hold surface flat. Custom slat bar with added weight maintains vertical tension on the screen surface. The ends of the slat to be protected by heavy duty plastic caps enclosing a preset adjustable mechanism for screen tensioning. Case shall be a white powder coated extruded aluminum. Bottom of case to be self-trimming with a built-in flange around the bottom of the case. A section of the bottom of the case shall be an aluminum door equipped with hinges so that it opens and closes automatically with the lowering and raising of the picture surface. The balance of the bottom of the case shall be a second hinged aluminum door with manual opening to provide access. Hinges shall be mounted in a concealed way. Junction box shall be internally integrated into the housing making it possible to install the housing and wire to the building's electrical system during construction. The junction box shall contain a quick connect connector that is mounted in the housing for easy plug-in connection to the motorized fabric and roller assembly. The motorized fabric and roller assembly to be installed in the case at the factory or at a later time at the job site. To be complete with three position control switch and cover plate. Suitable for use in environmental air space in accordance with section 300-22 (c) of the National Electric Code, and sections 2-128, 12-010 (3) and 12-100 of the Canadian Electrical Code, part 1, CSA C22.1. Screen to be listed by Underwriters' Laboratories.



VIDEO (NTSC 4:3) FORMAT DIMENSIONS

Viewing Area		Nominal Diagonal		Overall Length of Case (does not include flange)		Approx. Ship. Wt.	
H x W	Cm	In.	Cm	In.	Cm	Lbs.	Kg
43" x 57"	109 x 145	72"	183	79 ¹ / ₄ "	201	102	46.3
50" x 67"	127 x 170	84"	213	90 ¹ / ₄ "	229	114	51.7
60" x 80"	152 x 203	100"	254	104 ¹ / ₄ "	265	125	56.7
69" x 92"	175 x 234	120"	305	118 ¹ / ₄ "	300	148	67.1
87" x 116"	221 x 295	150"	381	145 ¹ / ₄ "	369	170	77.1
108" x 144"	274 x 366	180"	457	170 ¹ / ₄ "	432	189	85.7
120" x 160"	305 x 406	200"	508	187 ¹ / ₄ "	476	203	92.1

HDTV (16:9) FORMAT DIMENSIONS

Viewing Area		Nominal Diagonal		Overall Length of Case (does not include flange)		Approx. Ship. Wt.	
H x W	Cm	In.	Cm	In.	Cm	Lbs.	Kg
45" x 80"	114 x 203	92"	234	102 ³ / ₄ "	261	125	56.7
52" x 92"	132 x 234	106"	269	115 ¹ / ₄ "	293	140	63.5
54" x 96"	137 x 244	110"	279	119 ³ / ₄ "	304	145	65.8
58" x 104"	147 x 264	119"	302	128 ¹ / ₄ "	326	150	68.0
65" x 116"	165 x 295	133"	338	141 ¹ / ₄ "	359	163	73.9
78" x 139"	198 x 353	159"	404	166 ¹ / ₄ "	422	188	85.3
90" x 160"	229 x 406	184"	467	184	405	203	92.3

16:10 WIDE FORMAT DIMENSIONS

Viewing Area		Nominal Diagonal		Overall Length of Case (does not include flange)		Approx. Ship. Wt.	
H x W	Cm	In.	Cm	In.	Cm	Lbs.	Kg
50" x 80"	127 x 203	94"	239	103 ³ / ₄ "	264	125	56.7
60" x 96"	152 x 244	113"	287	120 ³ / ₄ "	307	145	65.8
69" x 110"	175 x 279	130"	330	134 ³ / ₄ "	342	157	71.2
87" x 139"	221 x 353	164"	417	163 ¹ / ₄ "	415	188	85.3

SQUARE FORMAT DIMENSIONS

Viewing Area		Overall Length of Case (does not include flange)		Approx. Ship. Wt.	
H x W	Cm	In.	Cm	Lbs.	Kg
50" x 50"	127 x 127	73 ¹ / ₄ "	186	93	42.2
60" x 60"	152 x 152	84 ¹ / ₄ "	214	104	47.2
70" x 70"	178 x 178	95 ³ / ₄ "	243	116	52.6
84" x 84"	213 x 213	112 ¹ / ₄ "	288	125	56.7
6' x 8'	183 x 244	122 ¹ / ₄ "	311	140	63.5
8' x 8'	244 x 244	125 ³ / ₄ "	319	148	67.1
7' x 9'	213 x 274	136 ¹ / ₄ "	346	155	70.3
9' x 9'	274 x 274	134 ³ / ₄ "	342	159	72.1
8' x 10'	244 x 305	149 ³ / ₄ "	380	165	74.8
10' x 10'	305 x 305	146 ³ / ₄ "	373	168	76.2
9' x 12'	274 x 366	170 ³ / ₄ "	434	189	85.7
12' x 12'	366 x 366	175 ¹ / ₄ "	445	194	88.0

All screens standard with 12" black drop at top.

Extra drop may alter case dimensions. Contact Da-Lite for details.

Overall case length dimensions $\pm 1/4"$.

Detail dimensional drawings, wiring diagrams and installation instructions available upon request.

Specifications subject to change without notice.

Custom formats and sizes available upon request.

All viewing surfaces will be seamless.

All viewing surfaces are standard with black backing except Da-Tex® and Dual Vision.

Audio Vision, High Contrast Audio Vision and High Contrast Cinema Perf available in sizes up to 87" x 116" in Video Format and 78" x 139" in HDTV Format.

WHEN ORDERING, MARK APPROPRIATE SELECTIONS:

Select size from charts on the other side.

Select viewing surface:

- Da-Mat®
- Pearlescent
- Audio Vision
- Dual Vision
- High Contrast Audio Vision
- High Contrast Da-Mat®
- Cinema Vision
- Da-Tex® (Rear)
- High Contrast Cinema Vision
- High Contrast Cinema Perf

Optional Accessories:

- Single motor Low Voltage Control(LVC) - external.
- Single motor Low Voltage Control(LVC) - built-in.
- Wireless Remote Control for LVC.
 - Radio Frequency Remote
 - Radio Frequency Range Extender available
 - Infrared Remote
- Key Locking Cover Plate for 120 V Switch or LVC.
- Key Operated Switch for 120 V only (NOTE: Cannot be used with LVC).
- 220/240 Volt (50 Hz) motor.
- Video Projector Interface - external.

Project:	_____
Architect:	_____
Phone:	_____
Contractor:	_____
Phone:	_____
Supervisor:	_____
Phone:	_____
Supplier:	_____
Date:	_____
Revised:	_____

- SCB-100 RS-232 Serial Control Board - external.
 - NET-100 Ethernet-Serial Adapter
- SCB-100 RS-232 Serial Control Board - built-in. Electrical connections will be on right end of screen case on units with built-in SCB-100.
 - NET-100 Ethernet-Serial Adapter
- SCB-200 RS-232 Serial Control Board - built-in. Electrical connections will be on right end of screen case on units with built-in SCB-200.
 - NET-200 Ethernet-Serial Adapter
 - WC-200 Wall Controller
 - IR-200 Infrared Remote

TENSIONED ADVANTAGE® DELUXE ELECTROL® SUGGESTED CEILING INSTALLATION

