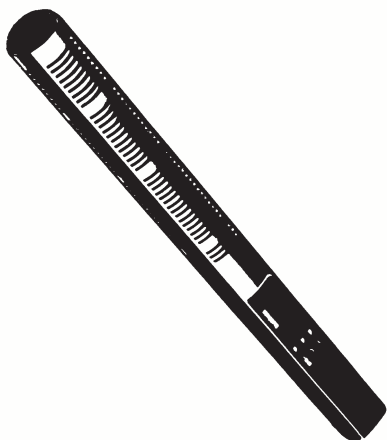


MKH 60 P48

Bedienungsanleitung
Instructions for use
Notice d'emploi
Istruzioni per l'uso
Instrucciones de uso



Inhalt / Contents / Sommaire / Indice / Contenido

Kurzbeschreibung	3	Brief description	10	Breve description	17	Descripción breve	31	Descrizione sommaria	24
Inbetriebnahme	4	Putting into service	11	Mise en service	18	Puesta en servicio	32	Messa in funzione	25
Speisung und Anschluß		Power supply and connections		Alimentation et raccordement		Alimentación y conexión		Alimentazione e collegamento	
Einstellen der Vordämpfung	5	Setting the pre-attenuation	12	Commutation du préattenuateur	19	Commutación de los filtros	33	Regolazione delle filtri	26
und der Filter		and filters		et des filtres		Datos técnicos	34	Dati tecnici	27
Technische Daten	6	Technical data	13	Caractéristiques techniques	20	Accesorios Recomendados	36	Accessori consigliati	29
Empfohlenes Zubehör	8	Recommended accessories	15	Accessoires recommandées	22	Alimentación y conexiones	36	Possibilità di alimentazione	
Anschluß- und Speisemöglichkeit	8	Powering and connection possibilities	15	Branchement et alimentation	22			e di collegamento	29

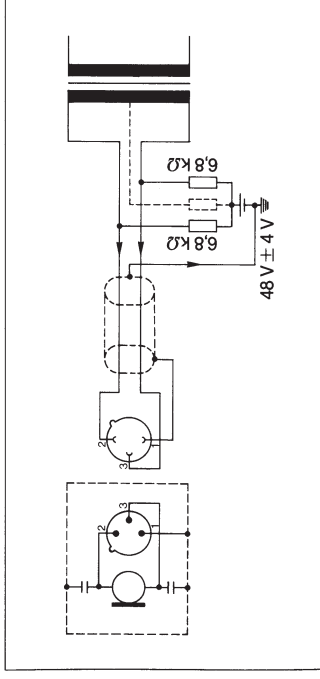
Brief description

The MKH 60 P 48 is a high-frequency condenser microphone with supercardioid / lobe characteristics.

Its features include:

- Low noise level, making possible high-dynamic recordings
- Uniform directional characteristic
- Wide frequency response range
- Electronically balanced output
- Pad switch (– 10 dB attenuation)
- Defeatable filters (roll-off and presence)

Putting into service



Power supply and connections

The MKH 60 P 48 is designed for use with a 48 V phantom power supply, as prescribed in DIN 45 596.

Plug: 3-pole XLR
Wiring: balanced
Impedance: 150 Ohm
Min. terminating impedance: 1000 Ohm

See page 15 for powering and connection possibilities.

Note: Extension cables should, if possible, be inserted between the power supply unit and the audio recorder or mixer. Total cable length should not exceed 200 m. At greater lengths the cable capacitance will affect microphone frequency response at the upper end of the response range.

Setting the pre-attenuation and filters

Pre-attenuation (S1)

Pad switch **S1** is used to attenuate microphone sensitivity by 10 dB. This feature should be used only when the microphone input at downline equipment is not designed to handle the high microphone output voltages generated at high sound pressure levels (which would result in distortion).

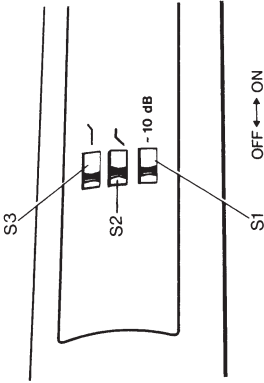
Setting the roll-off filter (S2)

The MKH60P 48 is equipped with a switchable roll-off filter to avoid low-frequency interference due to handling or wind noise.

The effect of the roll-off filter on the frequency response is shown on page 14. Regardless of the setting of switch **S2**, a cut-off filter is effective below 50 Hz to suppress disturbances due to low-frequency air or body noises (subsonic signals).

Setting the presence filter (S3)

The presence filter serves for compensation of losses at the high frequency end due to propagation loss and windscreens. The effect of the filter on the frequency response is shown on page 14.



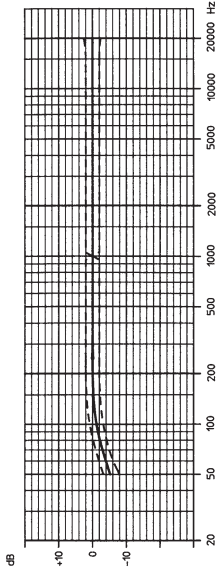
Technical data

Acoustic principle	pressure gradient interference receiver
Directional characteristic	supercardioid / lobe
Frequency response range	50 to 20 000 Hz
Free-field, no-load transmission factor at 1 kHz	40 mV / Pa (12,5 mV / Pa)
Equivalent sound pressure level as per DIN 45 500, curve A	8 dB (15 dB)
as per DIN 45 405 / CCIR 468	18 dB (26 dB)
Max. sound pressure level	125 dB (135 dB)
Output	balanced
Nominal impedance	150 Ohm
Min. terminating impedance	1000 Ohm
Pre-attenuation	10 dB, defeatable

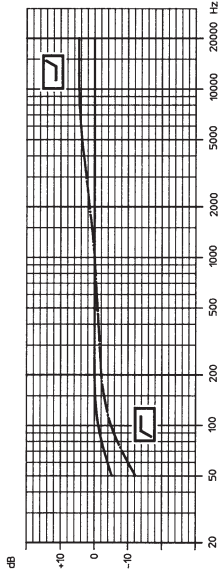
Low-cut filter	18 dB / oct. below 50 Hz
Roll-off filter	additional 5 dB attenuation at 100 Hz
Presence filter	5 dB emphasis at 10 kHz
Power supply	phantom supply as per DIN 45 596
Supply voltage	44 to 52 V
Supply current	2 mA
Dimensions in mm	25 ϕ x 285
Weight	approx. 150 g
Standard equipment	1 MKH60P48 microphone

Values in brackets with pad switch in position – 10 dB.
Subject to alterations.

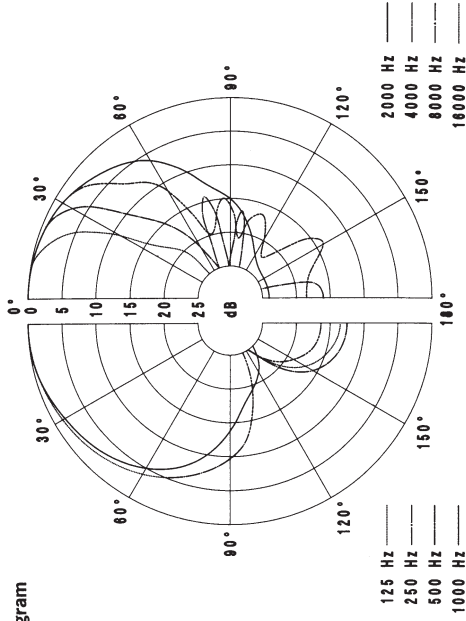
Frequency response



Roll-off filter
Presence filter



Polar diagram

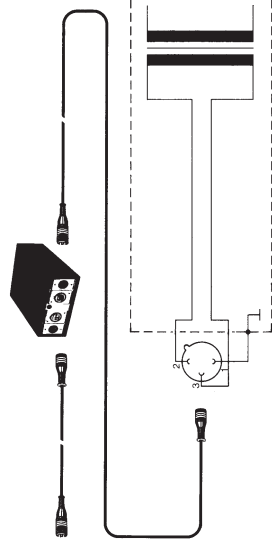


Recommended accessories

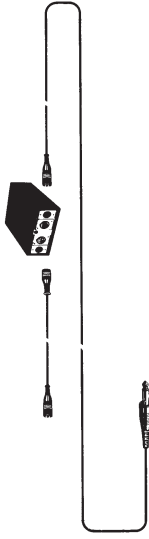
Shock mount	MZS 17	(Art.-No. 03084)
Pistol grip	MZP 816	(Art.-No. 01932)
Windscreen	MZW 60	(Art.-No. 03153)
Windscreen coat	MZH 60	(Art.-No. 03154)
Shock mount	MZS 40	(Art.-No. 03017)
Wind and pop screen	MZW 61	(Art.-No. 03194)
Quick release clamp	MZQ 40	(Art.-No. 35077)
Mixing panel	M 8	
Battery supplied powering adapter	MZA 14 P 48 U	(Art.-No. 02960)
Power supply	MZN 16 P 48 U	(Art.-No. 01241)

Powering and connection possibilities

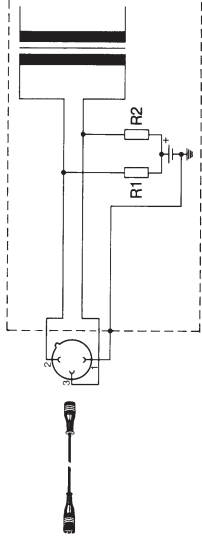
Connecting to balanced, floating microphone inputs




Connecting to unbalanced microphone inputs



Connecting to mixers and audio recording decks with phantom voltage supply





Sennheiser electronic GmbH & Co. KG
Am Labor 1
30900 Wedemark, Germany
Phone +49 (5130) 600 0
Fax +49 (5130) 600 300
www.sennheiser.com

Printed in Germany Publ. 10/07 47766/A02