

eH 150

evolution headphones

The eH 150 closed, dynamic hi-fi stereo headphones are the ideal partner for powerful, modern music, providing a high sound pressure level and a vivid, crisp bass response. Due to their effective attenuation of ambient noise, these headphones are particularly suitable for listening on the move.



- Closed, supra-aural design for great attenuation of ambient noise, ideal for portable use
- “Turbine” embossed diaphragms for strong bass performance and precise treble
- Ultra-lightweight, rugged design for comfortable, extended listening pleasure
- Well defined mid-band and spatial sound reproduction due to foam damping element
- Powerful neodymium magnets and lightweight diaphragms for precise trebles and high levels
- Powerful bass and increased signal levels for modern rhythm-driven music
- 10’ highly conductive OFC copper cable
- Replaceable leatherette ear pads
- 2-year guarantee



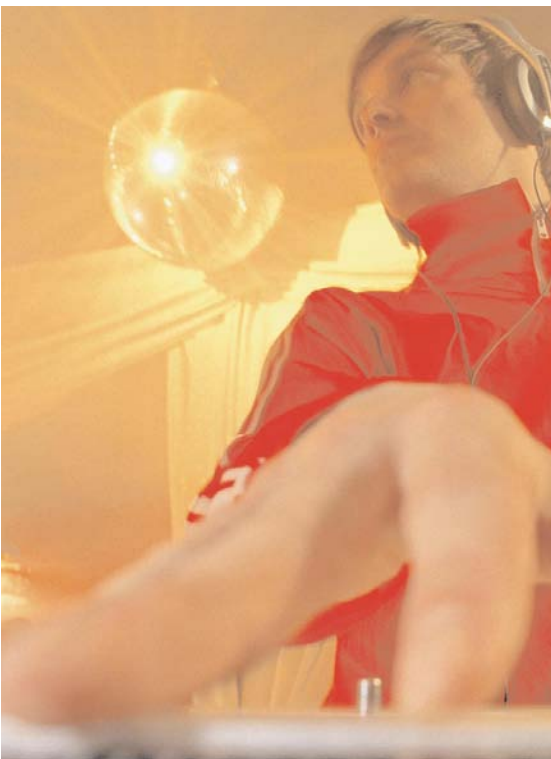
eH 250

The eH 250 closed, dynamic hi-fi stereo headphones have a balanced sound image with a slight emphasis on the bass response.

DJs will like their outstanding acoustic properties, their excellent attenuation of ambient noise, the soft, comfortable ear pads and the replaceable connection cable.



- Closed, supra-aural design for great attenuation of ambient noise, ideal for DJ use
- Optimized "turbine" embossed diaphragms for stronger, balanced bass performance and precise treble
- Replaceable cable and leatherette ear pads for long service life
- Ultra-lightweight, rugged design for comfortable, extended listening pleasure
- Well defined mid-band and spatial sound reproduction due to foam damping element
- Powerful neodymium magnets and lightweight diaphragms for precise trebles and high levels
- Powerful bass and increased signal levels for modern rhythm-driven music
- 10' highly conductive OFC copper cable
- 2-year guarantee



eH 350

The eH 350 are open, dynamic hi-fi stereo headphones offering a superbly natural sound reproduction. Due to their precise trebles and detailed sound image, these headphones are especially suitable for professional monitoring applications. The eH 350 feature rugged design and easily replaceable parts for long service life, such as the OFC connection cable or ear pads.



- Open, supra-aural design for natural, detailed sound reproduction, ideal for professional monitoring
- Innovative foam damping technology for well defined mid-band and spatial sound reproduction
- Replaceable cable and leatherette ear pads for long service life
- Ultra-lightweight, rugged design for comfortable, extended listening pleasure
- Well defined mid-band and spatial sound reproduction due to foam damping element
- Powerful neodymium magnets and lightweight diaphragms for precise trebles and high levels
- Even bass reproduction and increased signal levels
- 10' highly conductive OFC copper cable
- 2-year guarantee



Model	eH 150	eH 250	eH 350
EAN Code	40 44156 00033 6	40 44156 00034 3	40 44156 00035 0
UPC Code	6 15104 10032 9	6 15104 10033 6	6 15104 10034 3
Cat. No.	500 093	500 094	500 095
Design	Headband in silver, earpiece in evolution color	Headband in silver, earpiece in evolution color, design ring in silver	Headband in silver, earpiece in evolution color
Frequency response	18 – 18,000 Hz	14 – 19,000 Hz	14 – 22,000 Hz
Frequency characteristics	diffuse field equalized	diffuse field equalized	diffuse field equalized
Transducer principle	dynamic, closed	dynamic, closed	dynamic, open
Impedance	32	32	32
SPL(1 kHz, 1 V _{eff})	115 dB	112 dB	112 dB
THD	< 0.5 %	< 0.2 %	< 0.2 %
Ear coupling	Supra-aural	Supra-aural	Supra-aural
Weight (w/o cable)	Approx. 130 g	Approx. 130 g	Approx. 130 g
Audio connection	3.5 mm stereo jack with 6.3 mm adapter	3.5 mm stereo jack with 6.3 mm adapter	3.5 mm stereo jack with 6.3 mm adapter
Cable	10' copper cable (OFC)	10' copper cable (OFC) detachable	10' copper cable (OFC) detachable
Packaging			
Design	Appealing re-closable blister in Evolution design. Self-explanatory through application pictures	Appealing re-closable blister in Evolution design. Self-explanatory through application pictures	Appealing re-closable blister in Evolution design. Self-explanatory through application pictures
Packaging dimensions (H x W x D)	270 x 215 x 90 mm	270 x 215 x 90 mm	270 x 215 x 90 mm
Master carton dimensions (H x W x D)	485 x 450 x 305 mm	485 x 450 x 305 mm	485 x 450 x 305 mm
Units per master carton	10	10	10
Languages	D, GB, F, E	D, GB, F, E	D, GB, F, E