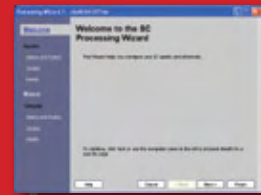
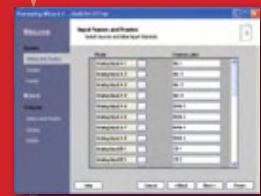


Configure complex systems elegantly with the power of HiQnet System Architect™



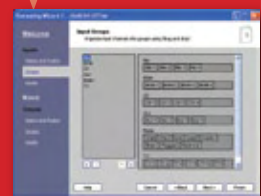
WELCOME

The pre-configured architecture of the SC 32 and SC 64 allows the devices to be set up and deployed without significant programming. At the heart of the processing configuration is the SC Processing Wizard within HiQnet System Architect™ which provides a step-by-step approach to the naming, routing, organization and mixing of signals.



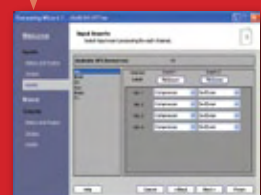
INPUT NAMES AND ROUTES

Sources for the input processing channels are selected and the input processing channels themselves are given meaningful labels.



INPUT GROUPS

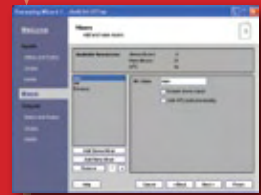
The input processing channels are organized into logical groups using 'drag and drop'. These groups could represent anything from microphone groups to inputs associated to particular zones. Groups can be added, removed and reordered as required.



INPUT INSERTS

Input insert processing is selected for each channel within the organized groups. A Fill Down function allows the same insert to be selected for all members of the currently selected group. There are two input insert positions (see table for available inserts).

	Input Insert 1	Input Insert 2	Output Insert
Wire	✓	✓	✓
Advanced Feedback Suppression (AFS™)	✓		
Automatic Gain Control (AGC)	✓	✓	✓
Compressor	✓	✓	
De-Esser	✓	✓	
Sub-Harmonic Synthesizer	✓	✓	
12-Band Notch Filter	✓		
12-Band PEQ Filter	✓		
Ambient Noise Compensation (ANC)			✓
AutoWarmth®			✓
Gain			✓



MIXERS

Multiple mixes can be set up and named. These mixes may serve individual or multiple zones, and channel priorities can later be assigned for applications requiring signals to be lowered in level by other signals of a higher priority. An application where this might be used is in a facility where a background music source should be attenuated by a live band input which in turn should be attenuated by a house microphone. What signals are present and the user-definable attenuation levels determine what signals are heard.



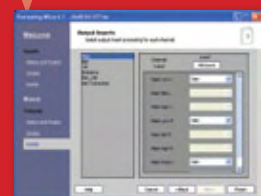
OUTPUT NAMES AND ROUTES

Sources for the output processing channels are selected, crossover types are applied and the output processing channels are given meaningful labels.



OUTPUT GROUPS

The output processing channels are organized into logical groups using 'drag and drop'. These groups could represent anything from output types to output zones. Groups can be added, removed and reordered as required.



OUTPUT INSERTS

Output insert processing is selected for each channel within the organized groups. A Fill Down function allows the same insert to be selected for all members of the currently selected group. There is one output insert position (see table for available inserts).

HiQnet SYSTEM ARCHITECT™

HiQnet System Architect also offers a multitude of features which can be used with the SC 32 and SC 64 including a built-in scheduler and rapid creation of user-specific software control and monitoring interfaces.



SC 32 | SC 64

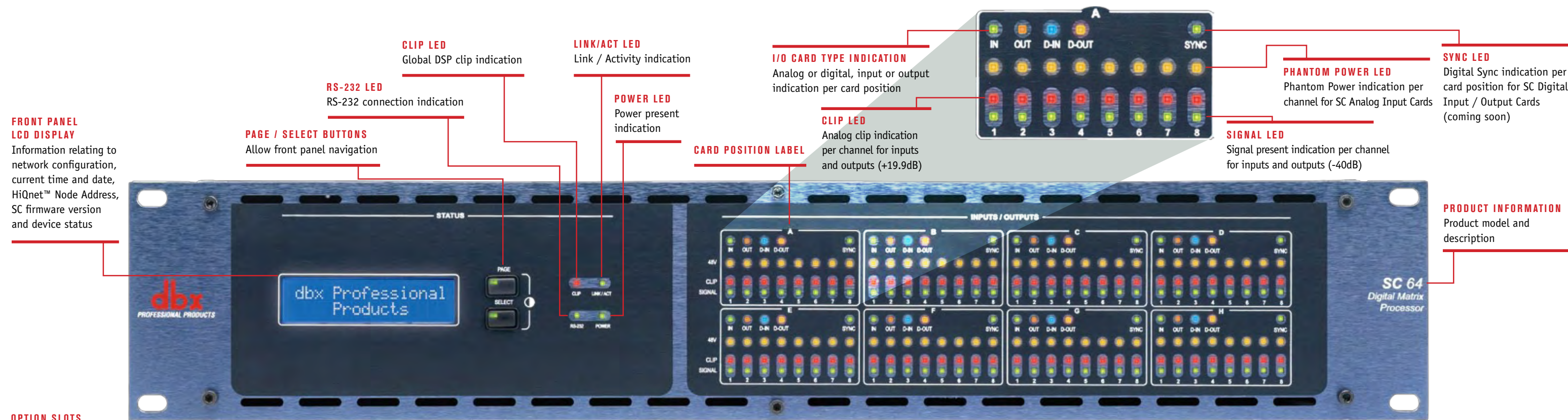
Digital Matrix Processors



dbx Professional Products
8760 South Sandy Parkway
Sandy, Utah 84070
801.566.8800



Unparalleled DSP capability and extreme routing flexibility doesn't have to mean complicated...



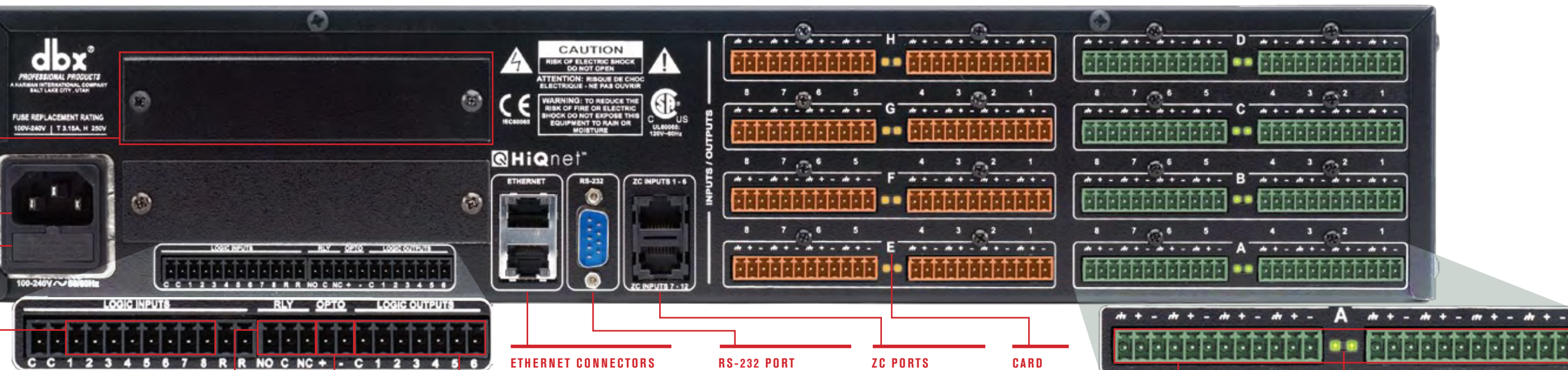
OPTION SLOTS
High-speed Option Slots accommodating high-bandwidth networked audio options cards (coming soon)

SC 32 – One Option Slot
SC 64 – Two Option Slots

POWER CONNECTOR
IEC power connector

FUSE
Field-serviceable fuse

CONTROL INPUTS
Allow up to eight contact closures, faders or rotary potentiometers to be used to control HiQnet™ parameters



*AES/EBU and S/PDIF



The SC 32 and SC 64 Digital Matrix Processors, offering 32 and 64 I/O channels respectively, set a new benchmark in the efficiency of providing audio solutions. Harnessing unparalleled DSP capability and extreme routing flexibility, the SC Processing Wizard guides users through the step-by-step configuration process all the way from inputs to outputs. Never before has the naming, routing, organization and mixing of many signals been so quick and simple.

	I/O Total	I/O per Card	I/O Card Slots	Option Slots
SC 32	32	8	4	1
SC 64	64	8	8	2

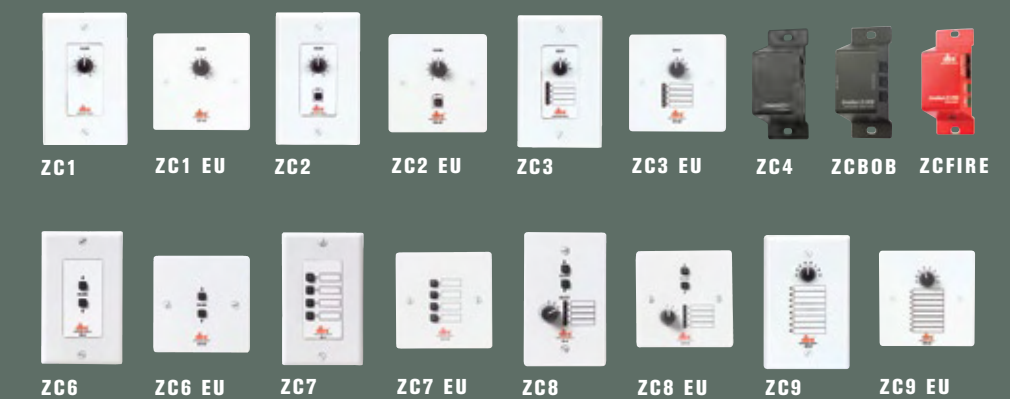
SC MEDIA ENGINE OPTION (COMING SOON)

The SC Media Engine Option is a factory option and comprises a DSP card and 1GB of flash storage. This facilitates the storage of media files on the SC device for subsequent routing and playback. Playback of stored media can be triggered by the HiQnet System Architect™ Scheduler function where each SC device has its own schedule residing on the device itself. This provides the perfect solution for automated messages such as for the closing of a store at a particular time or general messages repeated at regular intervals.

The other function of the SC Media Engine Option is to provide delayed page functionality. A common response of a person making a live page is to reduce the level of their speech upon hearing their amplified voice. A delayed page addresses this issue by recording the paging announcement and playing it back only when the person has finished making the announcement.

Zone Controllers

The Zone Controllers use analog DC voltages to provide logic control ranging from volume and mute control to contact closure preset selection and can be used with the SC 32 and SC 64. Wired with readily available and affordable CAT5 cable with universally accepted RJ-45 connectors, the ZC Zone Controllers offer simple yet elegant solutions to the contractor.



dbx
PROFESSIONAL PRODUCTS